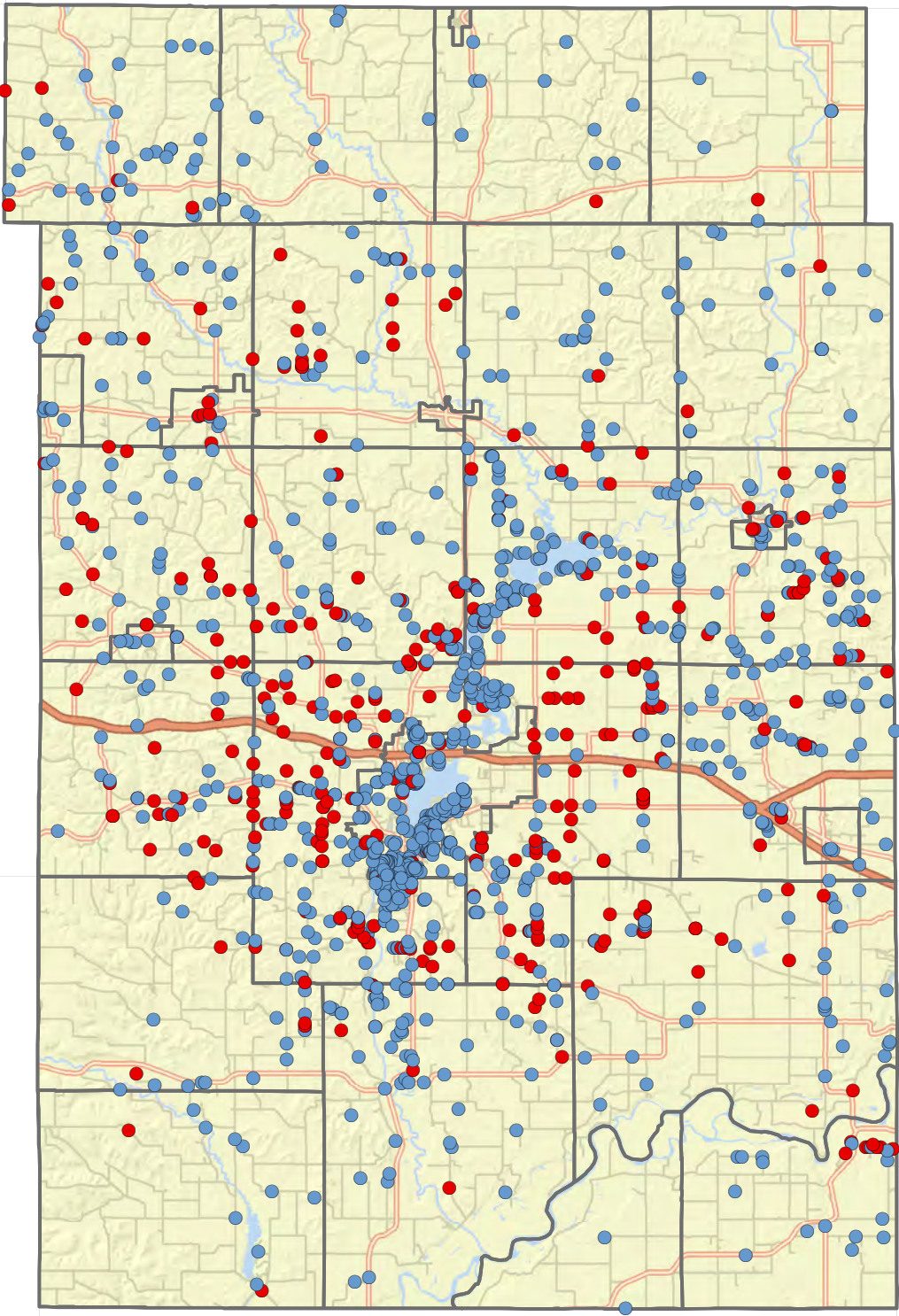


Dunn County Broadband Residential Survey - Question 1

Do you currently have access to Broadband or Internet service at your home?

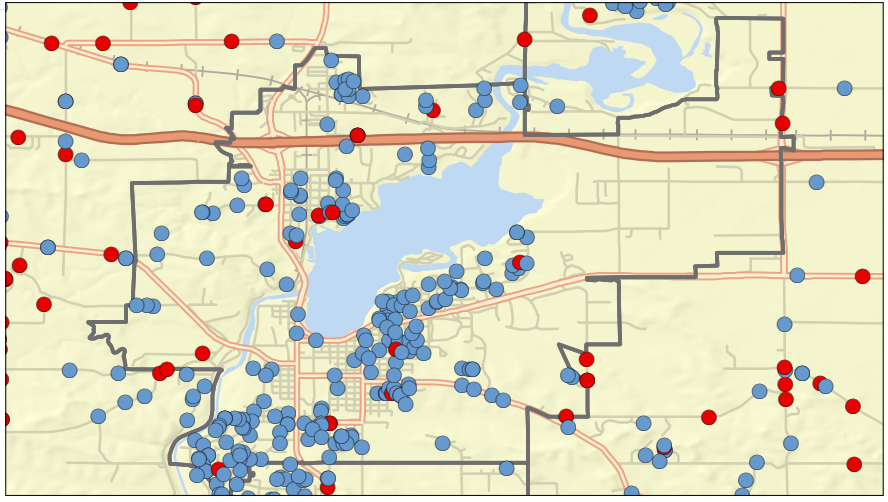
- Yes
- No / I am not sure

- City, Village or Town Boundary
- Freeway or Hiway
- Other Major or Minor Arterial
- Local Road



0 5 10 Miles

City of Menomonie

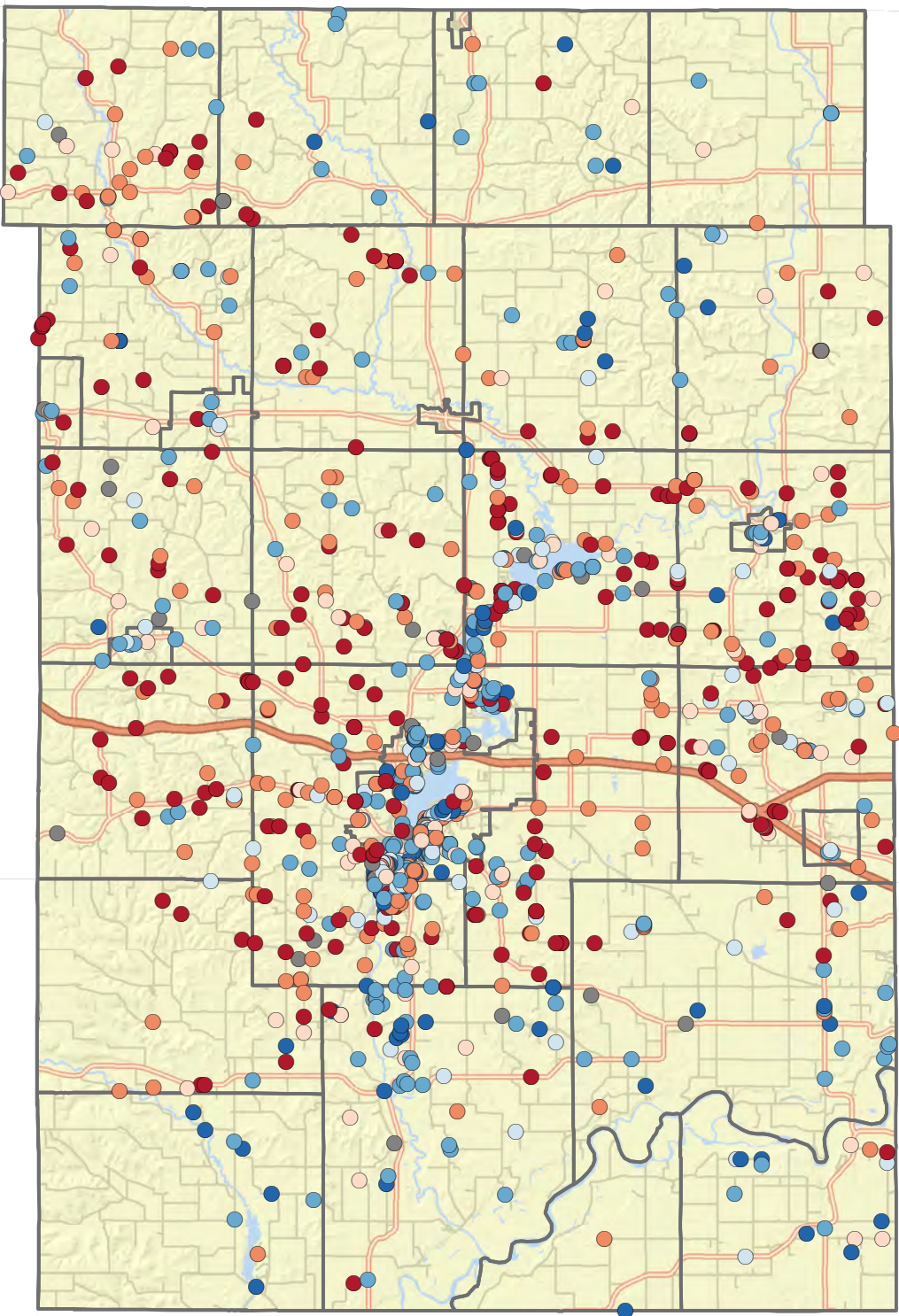


0 4 Miles

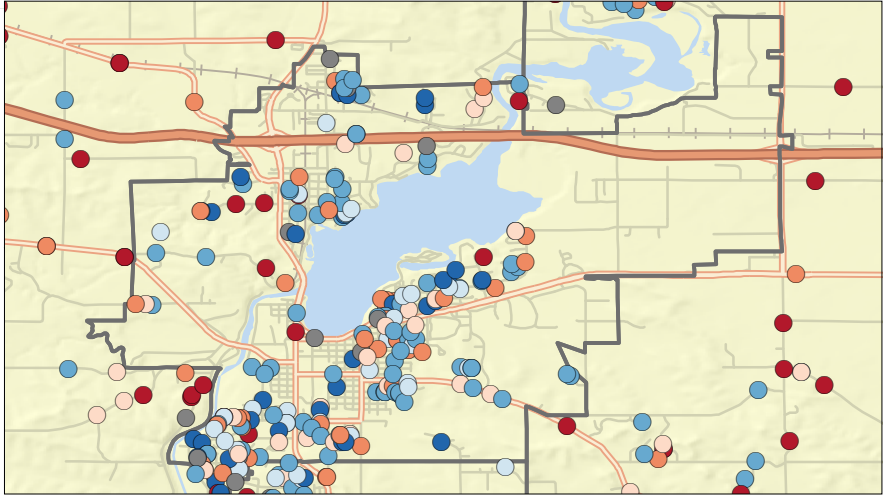
Dunn County Broadband Residential Survey - Question 2

How Satisfied are you with your Current Broadband/Internet Service at Home?

- Extremely Dissatisfied
- Moderately Dissatisfied
- Slightly Dissatisfied
- Neutral
- Slightly Satisfied
- Moderately Satisfied
- Extremely Satisfied
- City, Village or Town Boundary
- Freeway or Hiway
- Other Major or Minor Arterial
- Local Road



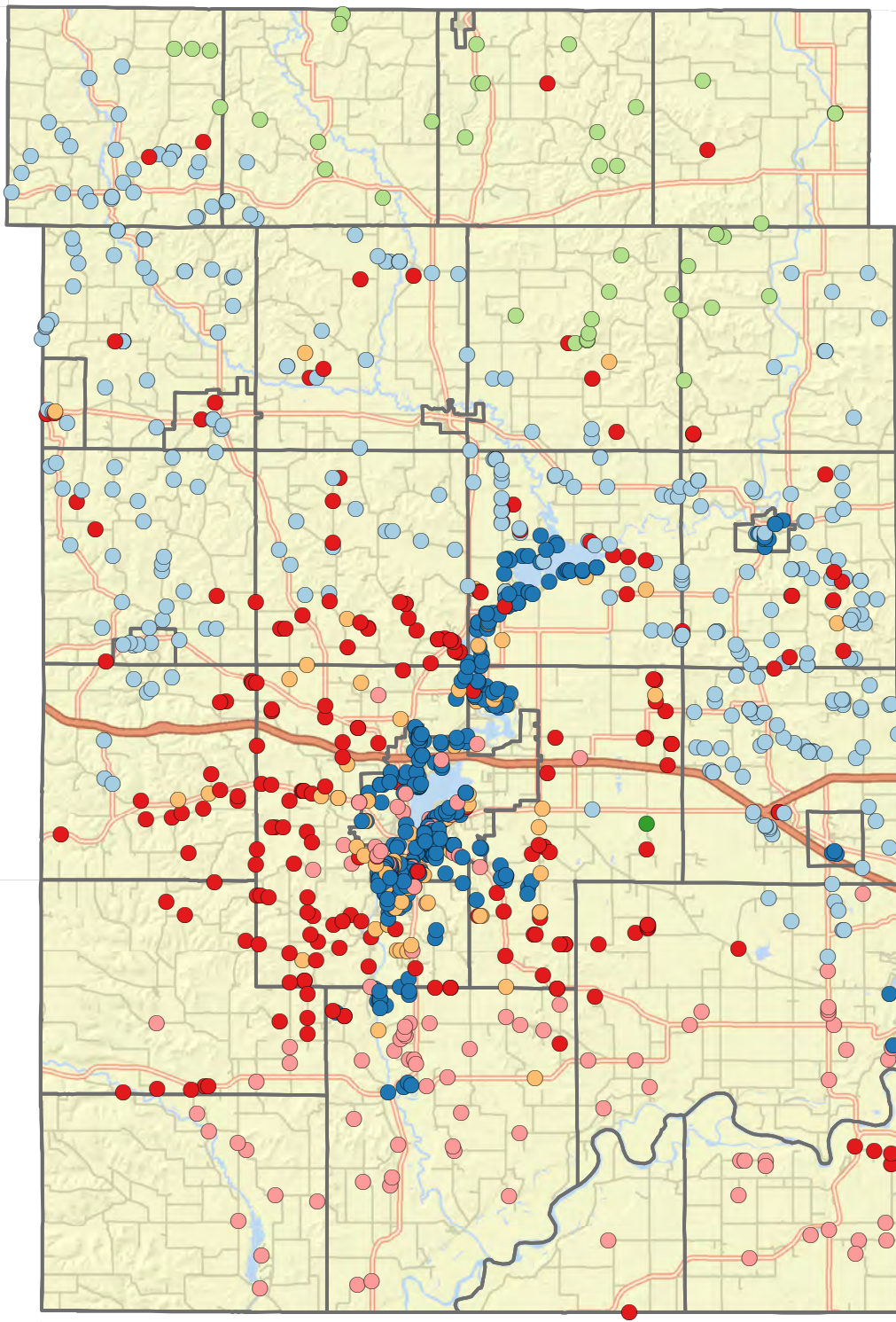
City of Menomonie



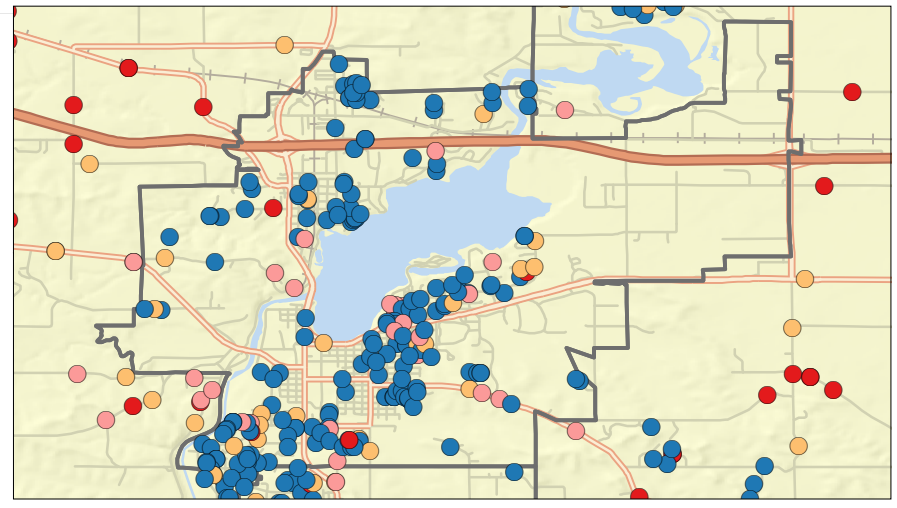
Dunn County Broadband Residential Survey - Question 4

Who is your Current Broadband/Internet Provider?

- CenturyLink
 - Charter/Spectrum
 - Mosaic Telcom
 - Clear Lake Telephone
 - West Wisconsin Telcom
 - Other
 - AT&T
-
- City, Village or Town Boundary
 - Freeway or Highway
 - Other Major or Minor Arterial
 - Local Road



City of Menomonie



0 5 10 Miles

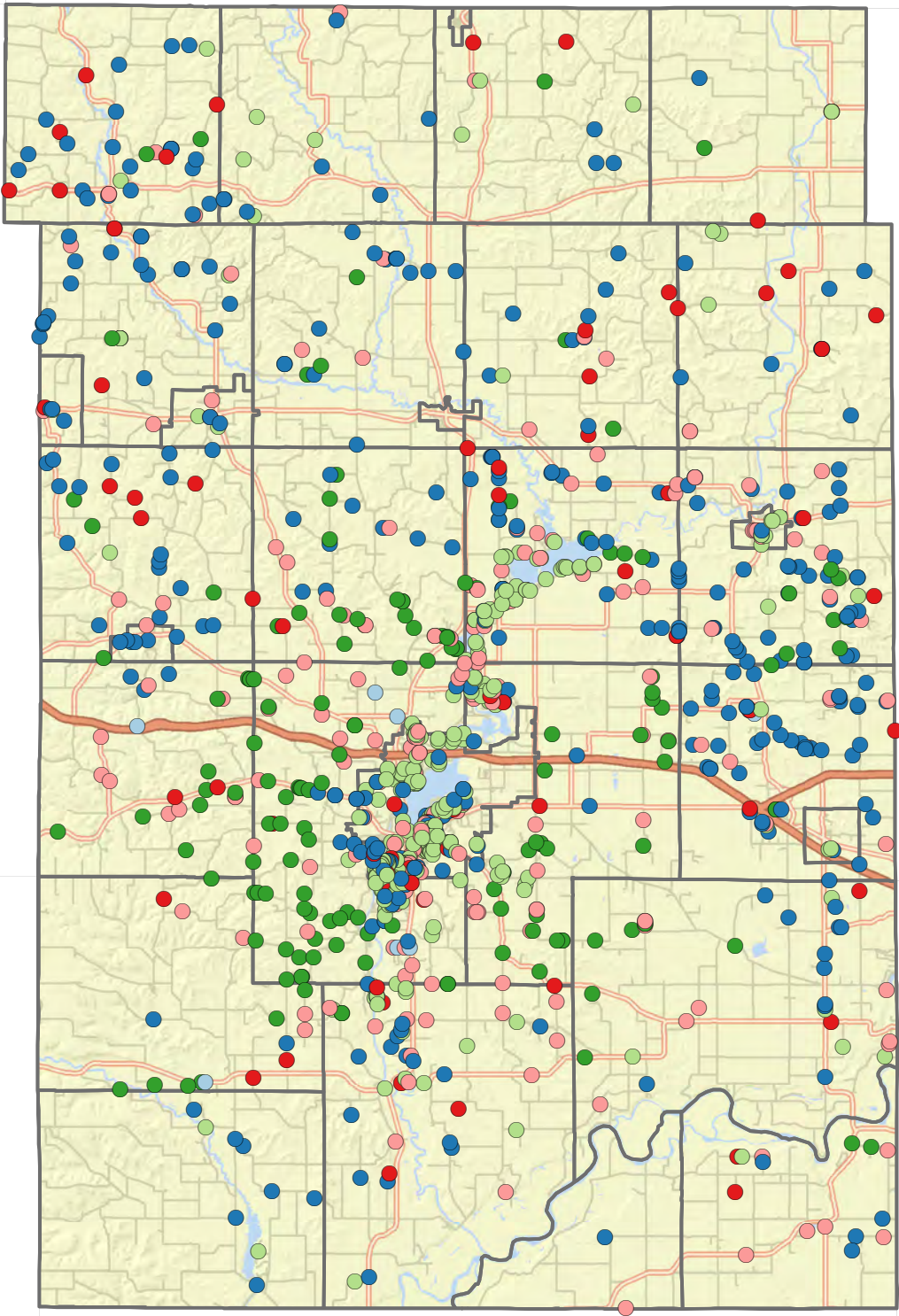
0 4 Miles

Dunn County Broadband Residential Survey - Question 5

Which of the following most represents your current Broadband/Internet service at your home?

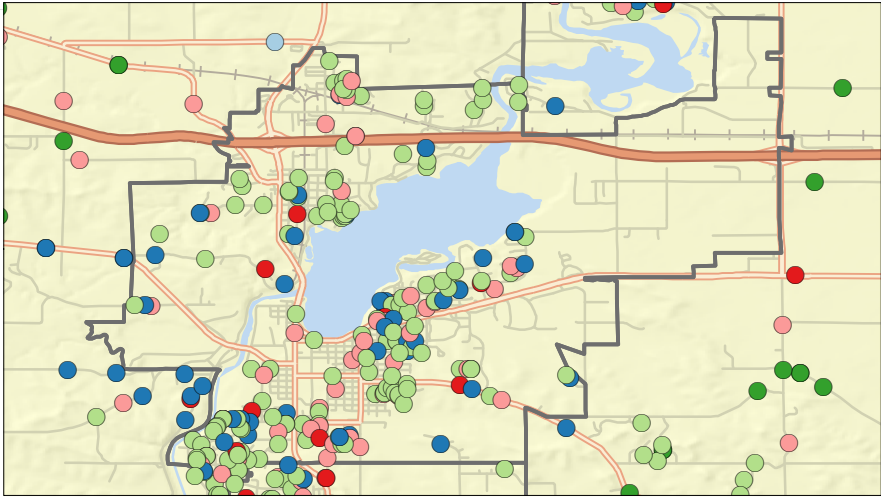
- Dial-Up
- DSL (Digital Subscriber Line)
- Cable Modem
- Satellite
- Wireless
- Unsure / Do not know

- City, Village or Town Boundary
- Freeway or Highway
- Other Major or Minor Arterial
- Local Road



0 5 10 Miles

City of Menomonie



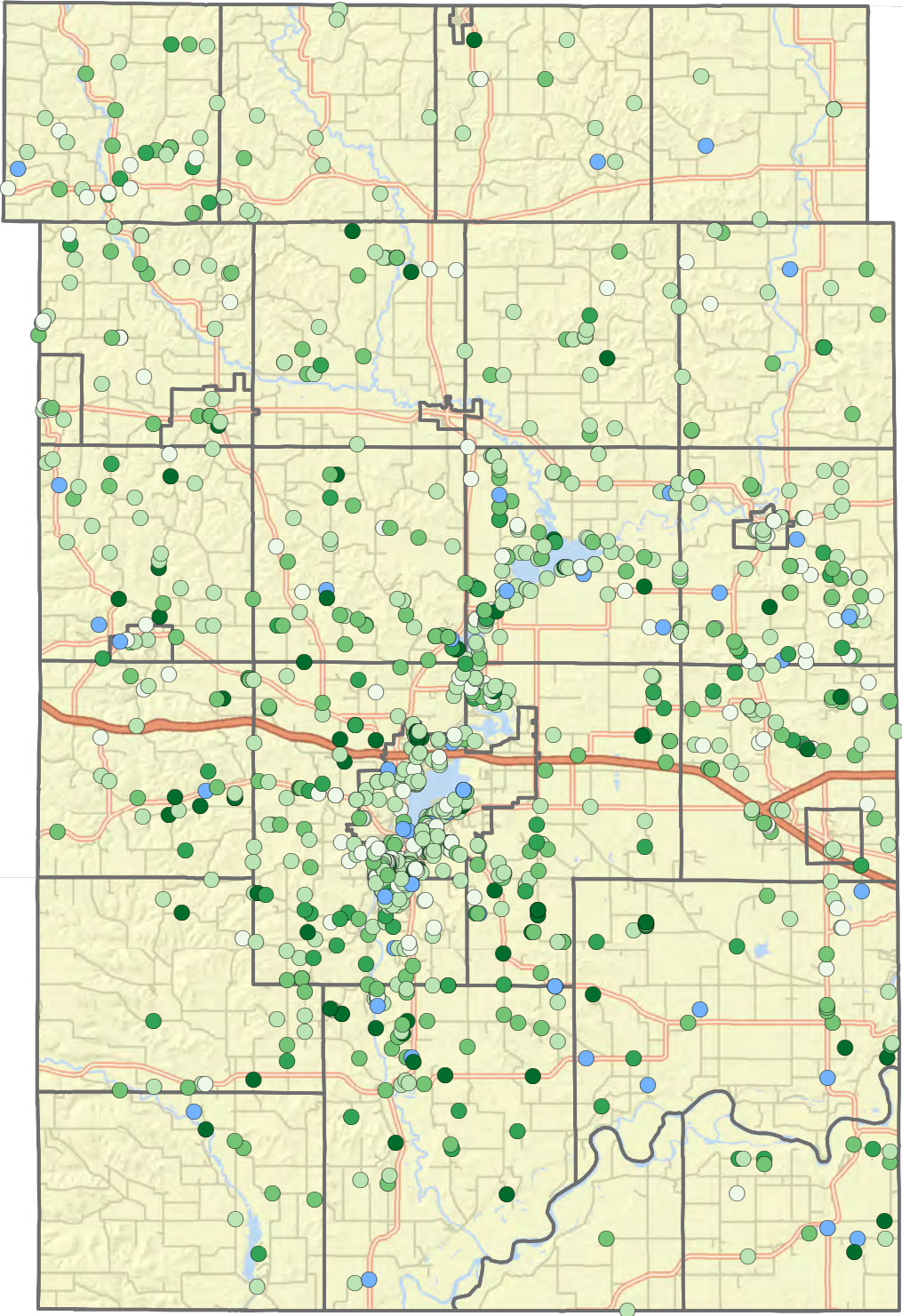
0 4 Miles

Dunn County Broadband Residential Survey - Question 7

Approximately, what is your current monthly cost for Broadband/Internet Service?

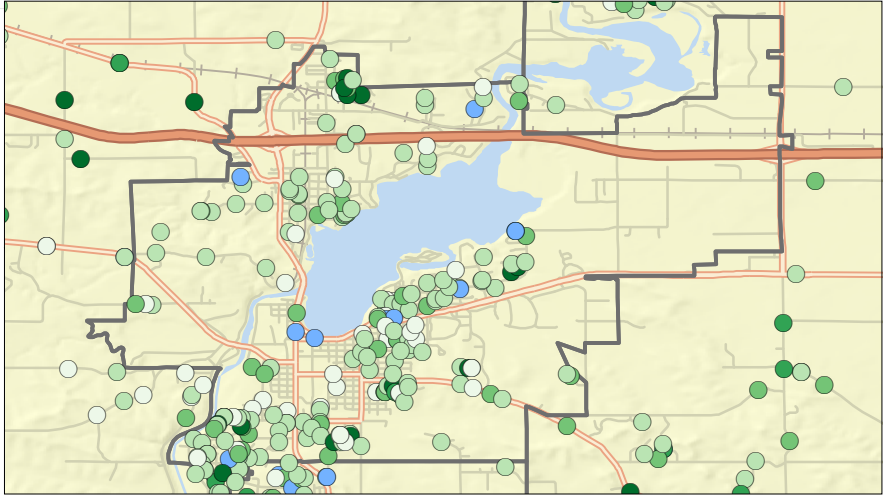
- Less than \$50
- \$51 to \$75
- \$76 to \$100
- \$101 to \$125
- \$126 or more
- Unsure / Do not know

- City, Village or Town Boundary
- Freeway or Highway
- Other Major or Minor Arterial
- Local Road



0 5 10 Miles

City of Menomonie

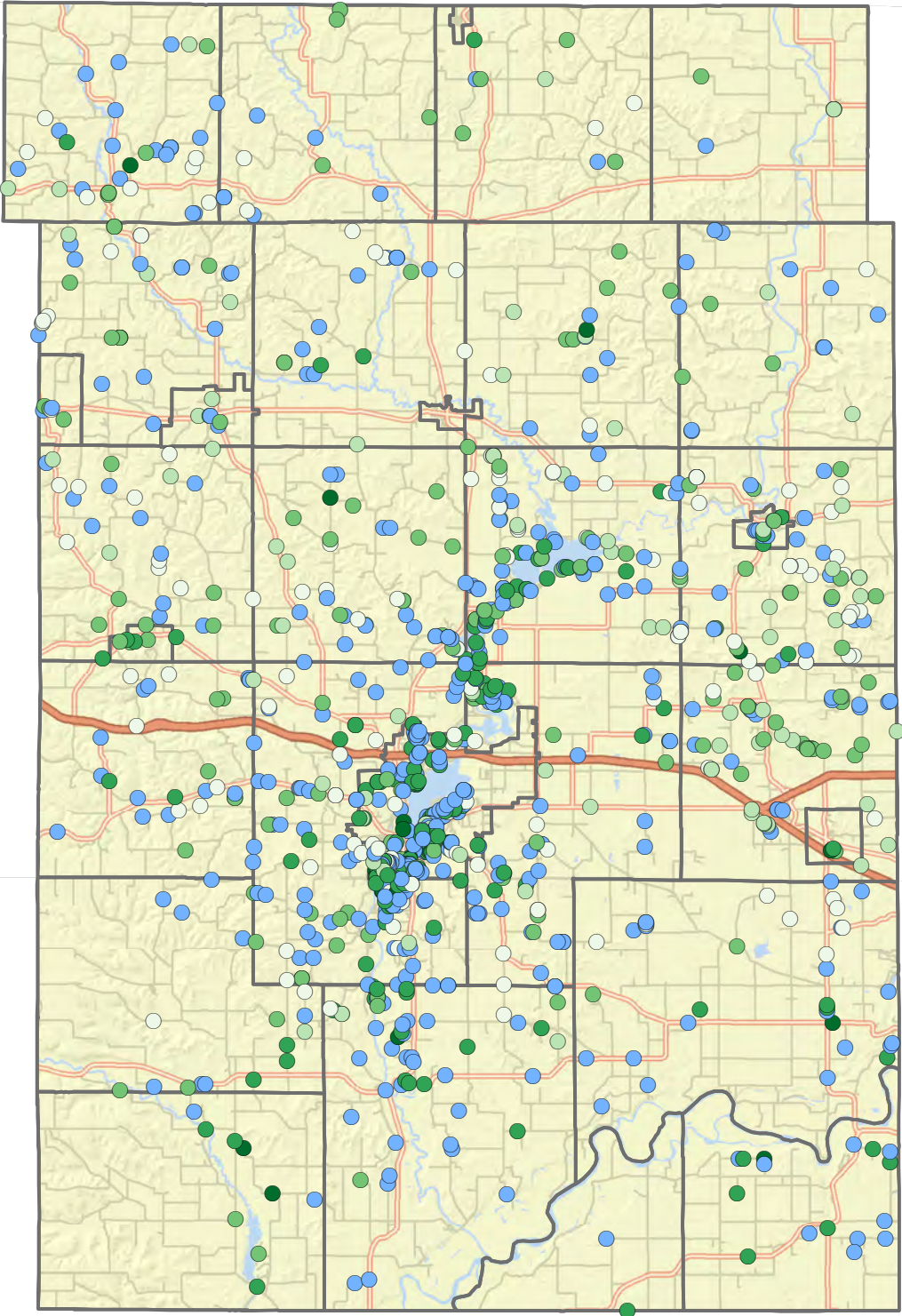


0 4 Miles

Dunn County Broadband Residential Survey - Question 8

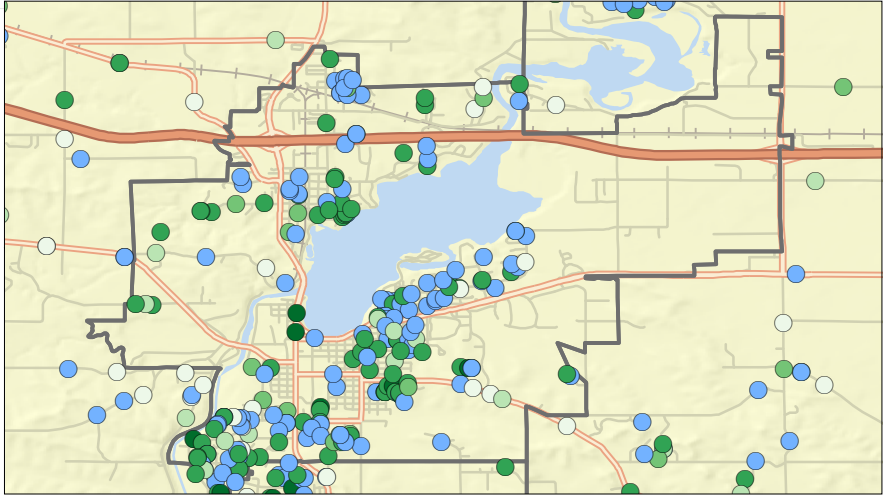
What is the advertised Internet download speed in megabits (mbps) for your current Broadband/Internet services at your home?

- 1-4 Mbps
 - 5-9 Mbps
 - 10-24 Mbps
 - 25-99 Mbps
 - 100+ Mbps
 - Unsure / Do not know
-
- City, Village or Town Boundary
 - Freeway or Highway
 - Other Major or Minor Arterial
 - Local Road



0 5 10 Miles

City of Menomonie

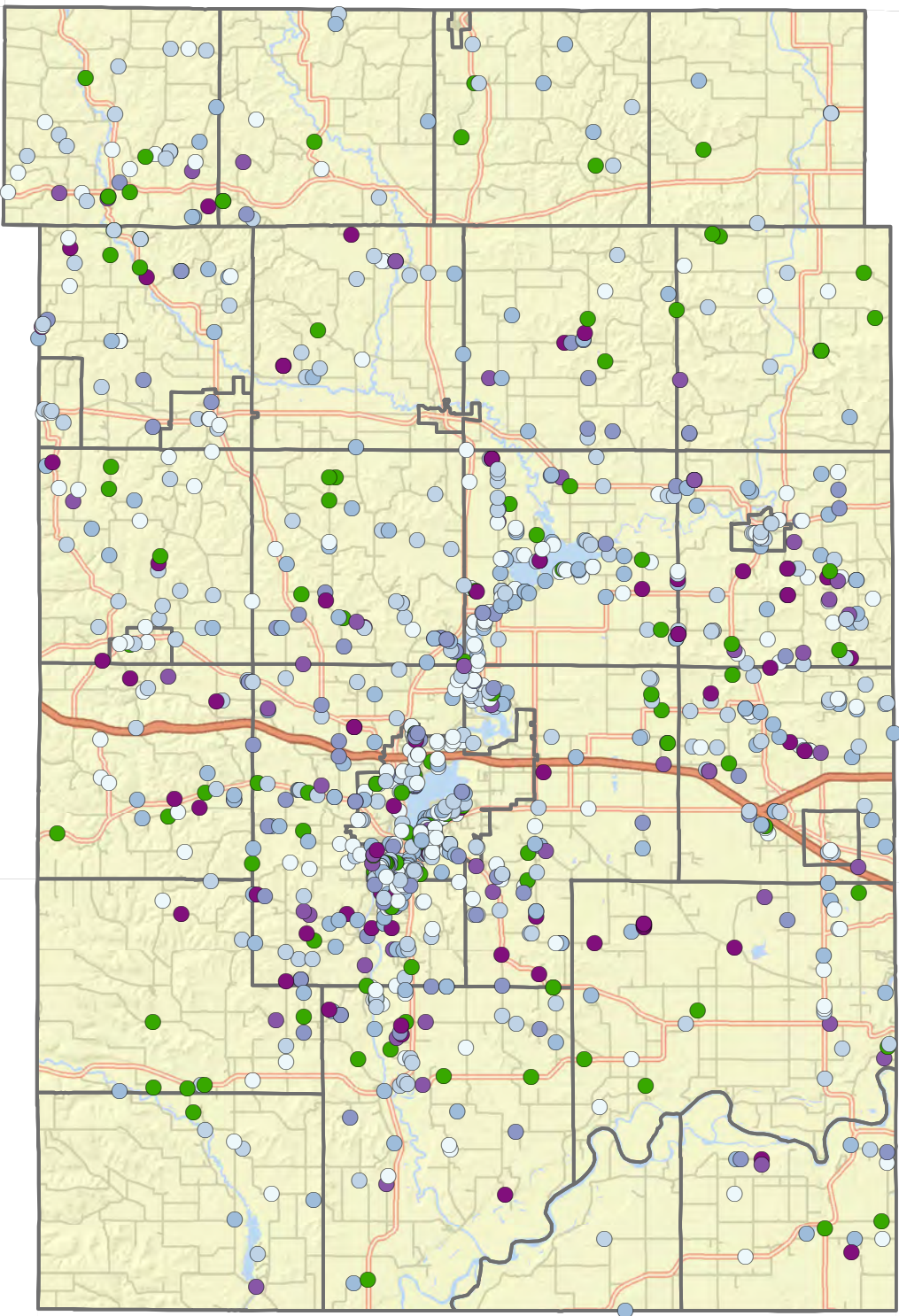


0 4 Miles

Dunn County Broadband Residential Survey - Question 9

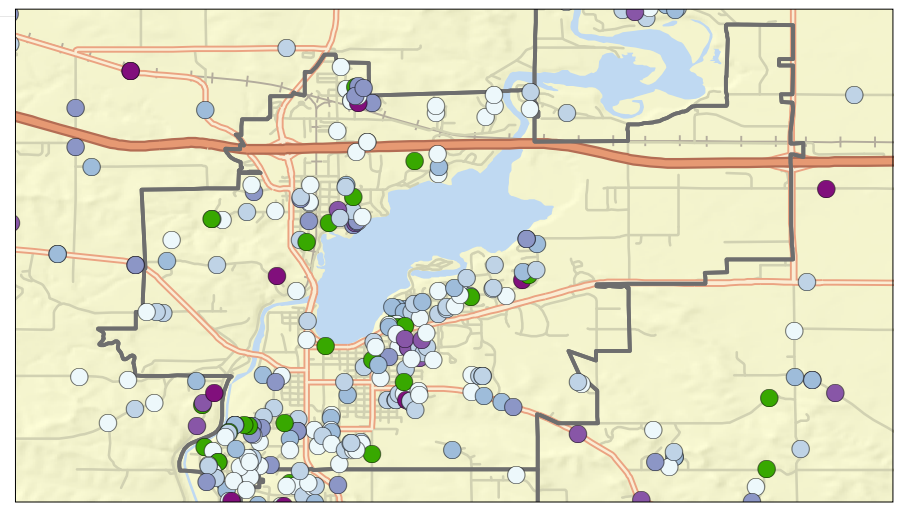
What is the maximum you would be willing to pay for high speed Internet (with a minimum download speed of 25 mbps and 4 mbps upload - per federal definition)?

- Less than \$39.99 per month
 - Between \$40 and \$49.99 per month
 - Between \$50 and \$59.99 per month
 - Between \$60 and \$69.99 per month
 - Between \$70 and \$79.99 per month
 - \$80 or more per month
 - Unsure / Do not know
- City, Village or Town Boundary
 - Freeway or Highway
 - Other Major or Minor Arterial
 - Local Road



0 5 10 Miles

City of Menomonie



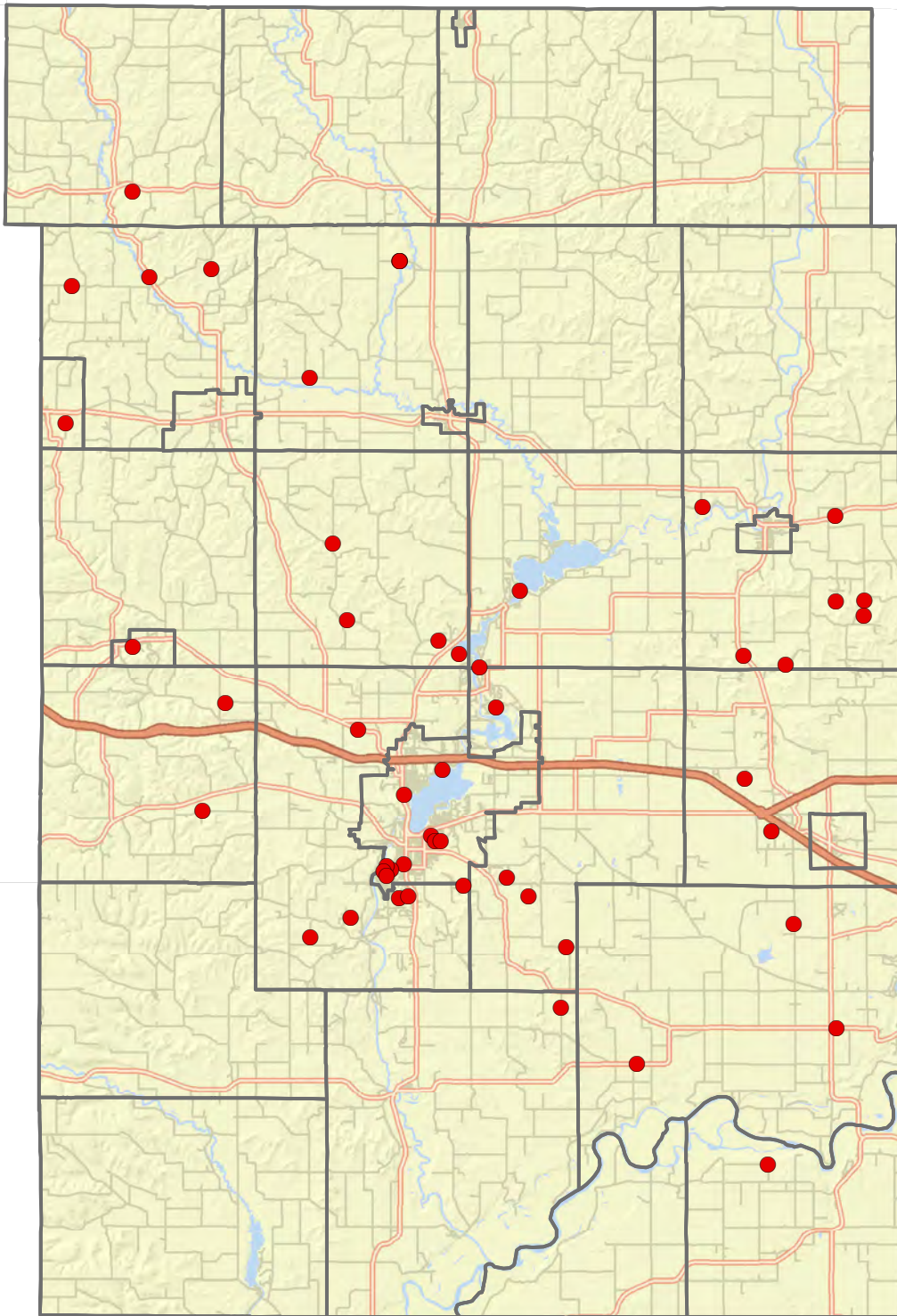
0 4 Miles

Dunn County Broadband Residential Survey - Question 21-7

At your home, which of the following devices do you currently access Broadband/Internet services from?

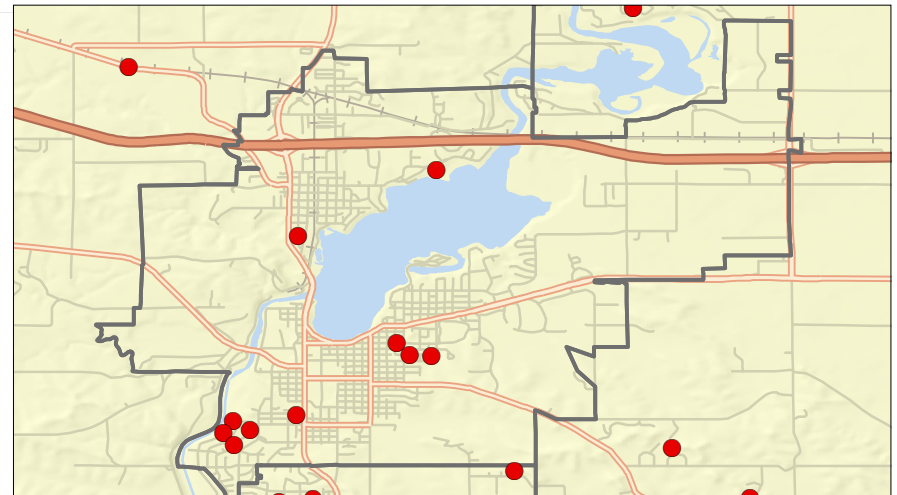
● Appliances

- City, Village or Town Boundary
- Freeway or Hiway
- Other Major or Minor Arterial
- Local Road



0 5 10 Miles

City of Menomonic



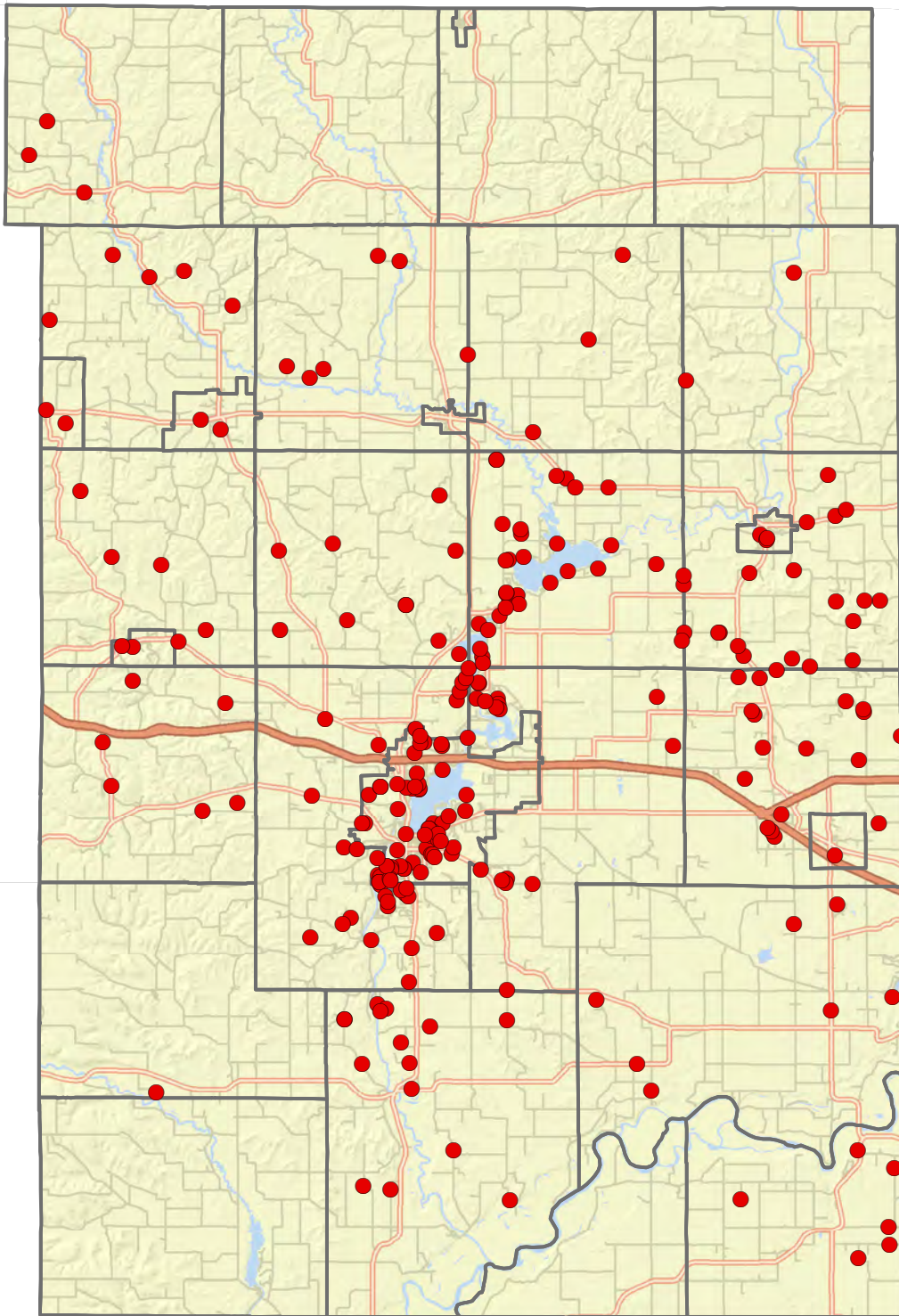
0 4 Miles

Dunn County Broadband Residential Survey - Question 21-5

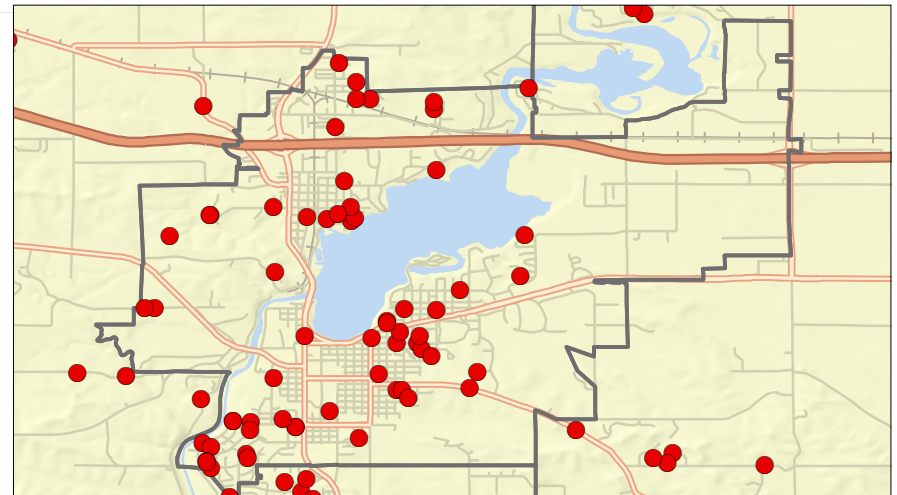
At your home, which of the following devices do you currently access Broadband/Internet services from?

● Blue Ray/DVR/DVD

- City, Village or Town Boundary
- Freeway or Hiway
- Other Major or Minor Arterial
- Local Road



City of Menomonie



0 5 10 Miles

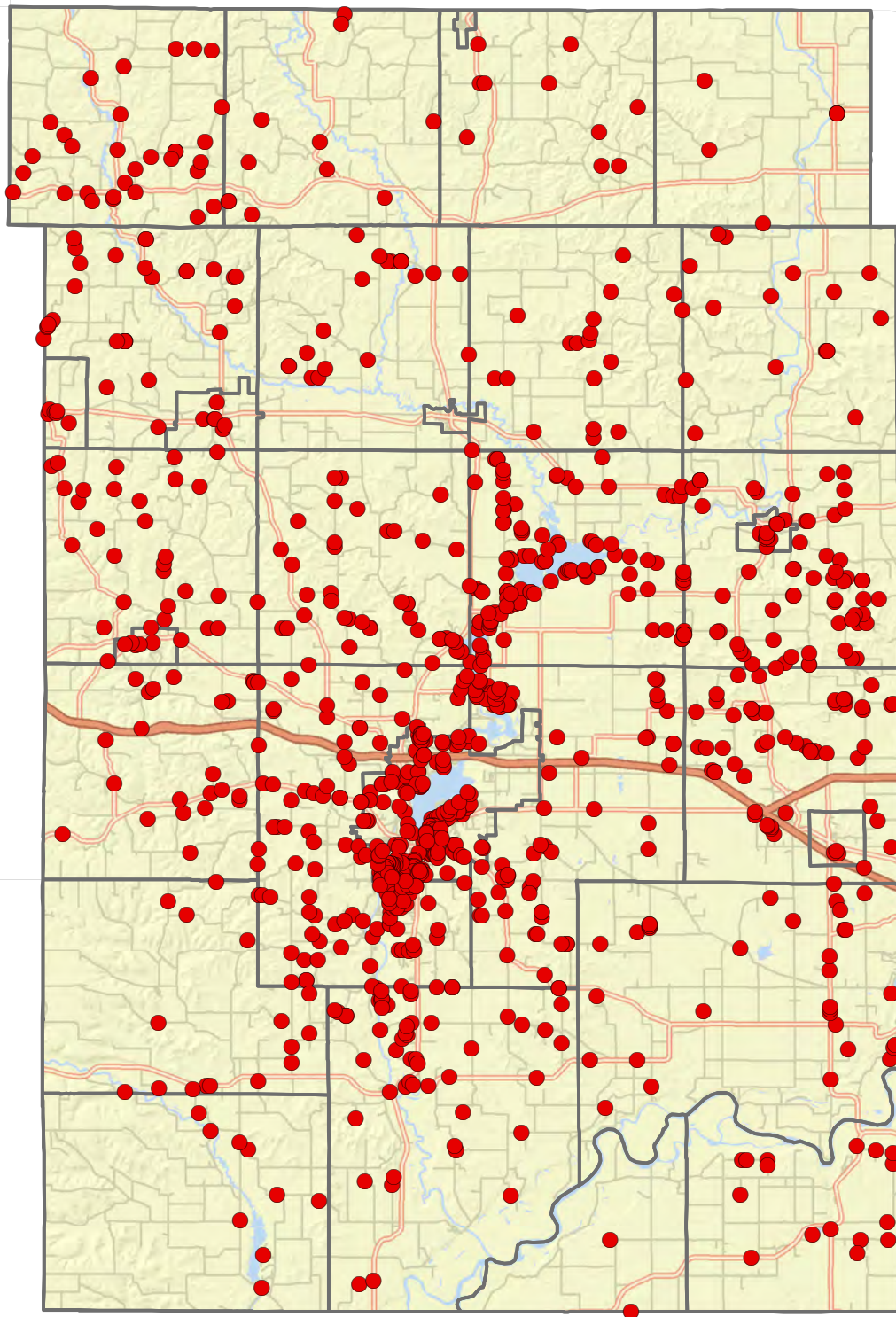
0 4 Miles

Dunn County Broadband Residential Survey - Question 21-1

At your home, which of the following devices do you currently access Broadband/Internet services from?

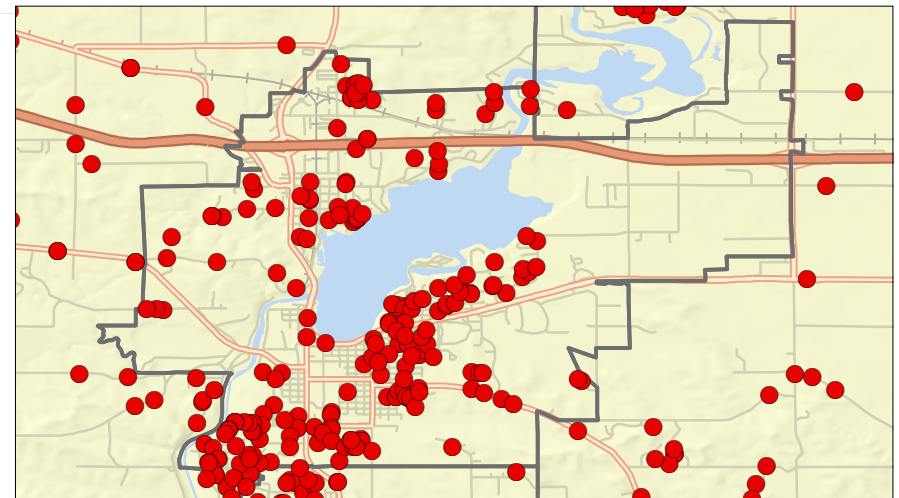
● Computer

- City, Village or Town Boundary
- Freeway or Hiway
- Other Major or Minor Arterial
- Local Road



0 5 10 Miles

City of Menomonic



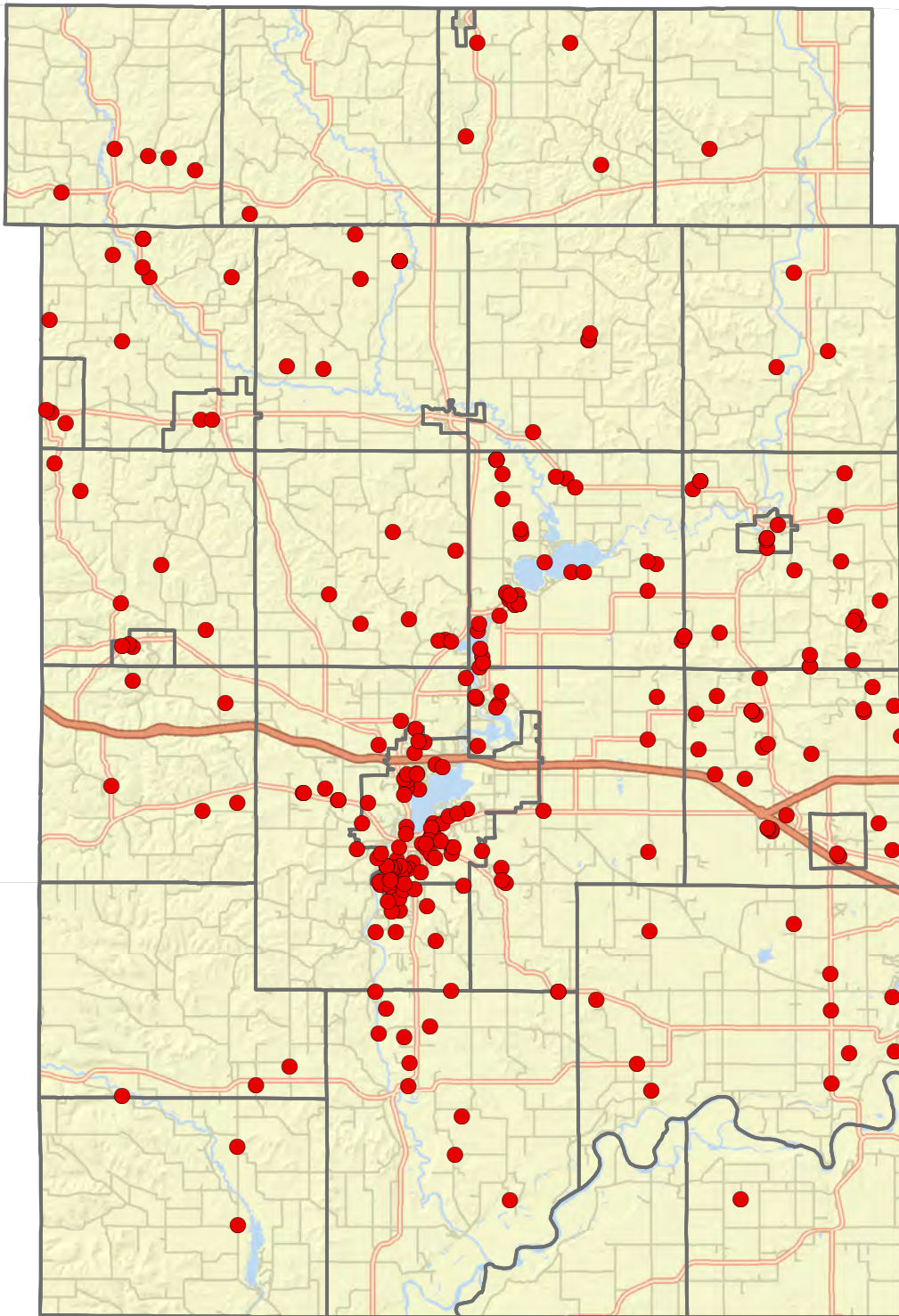
0 4 Miles

Dunn County Broadband Residential Survey - Question 21-6

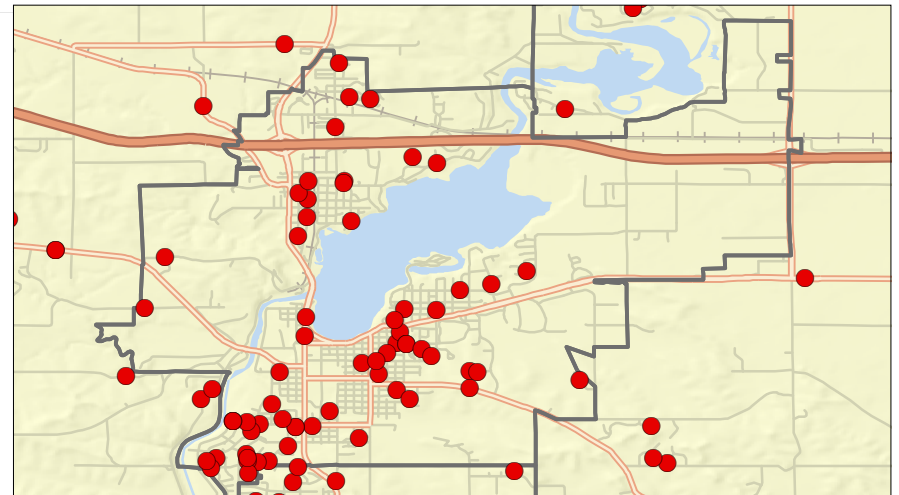
At your home, which of the following devices do you currently access Broadband/Internet services from?

● Gaming Systems

- City, Village or Town Boundary
- Freeway or Hiway
- Other Major or Minor Arterial
- Local Road



City of Menomonic



0 5 10 Miles

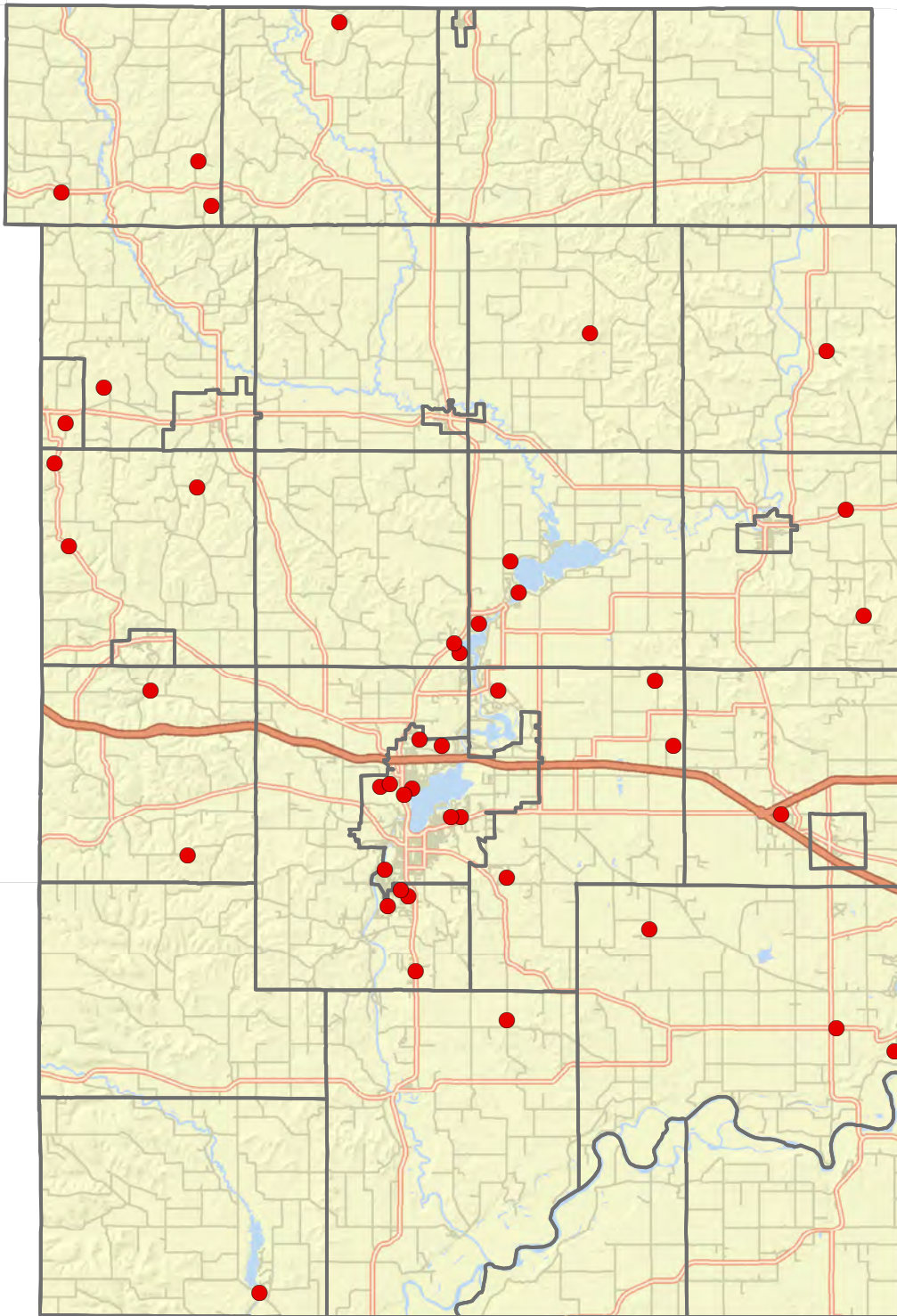
0 4 Miles

Dunn County Broadband Residential Survey - Question 21-9

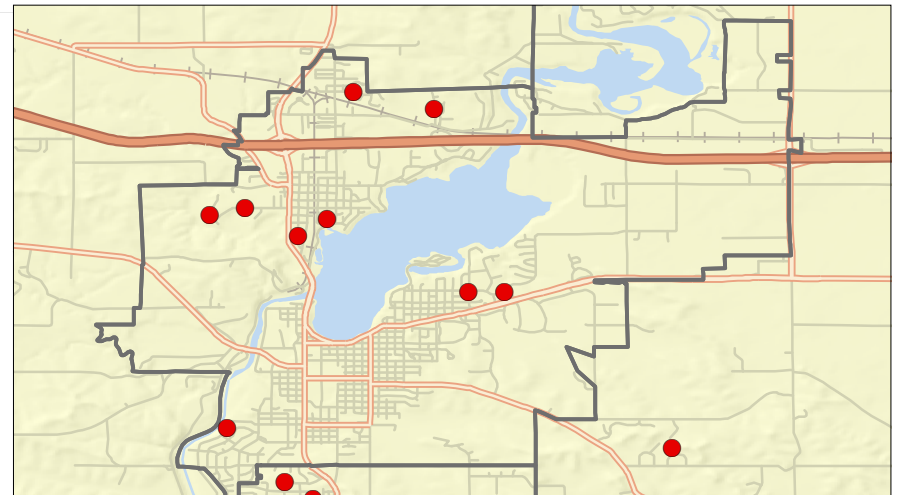
At your home, which of the following devices do you currently access Broadband/Internet services from?

● Other

- City, Village or Town Boundary
- Freeway or Hiway
- Other Major or Minor Arterial
- Local Road



City of Menomonie



0 5 10 Miles

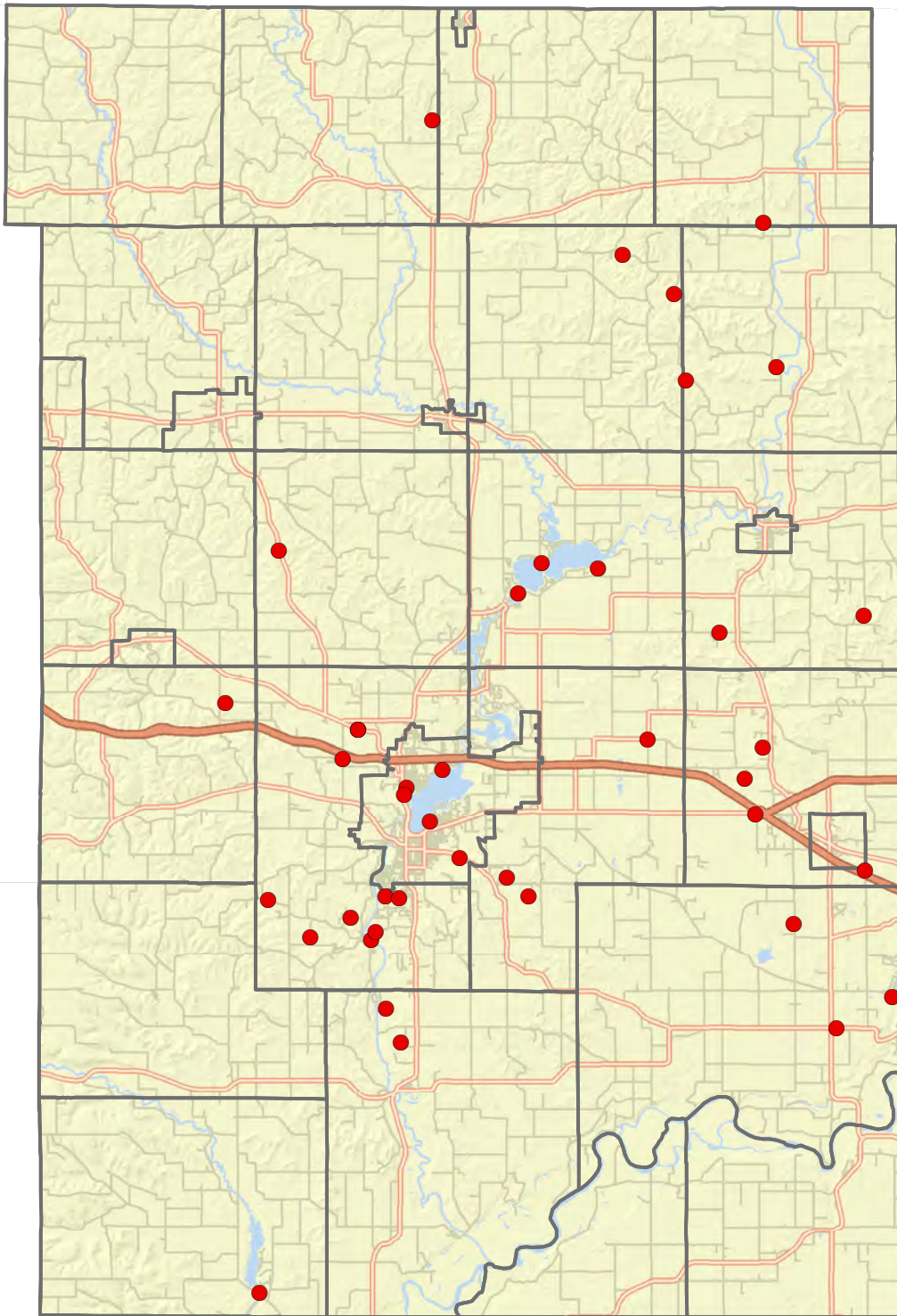
0 4 Miles

Dunn County Broadband Residential Survey - Question 21-8

At your home, which of the following devices do you currently access Broadband/Internet services from?

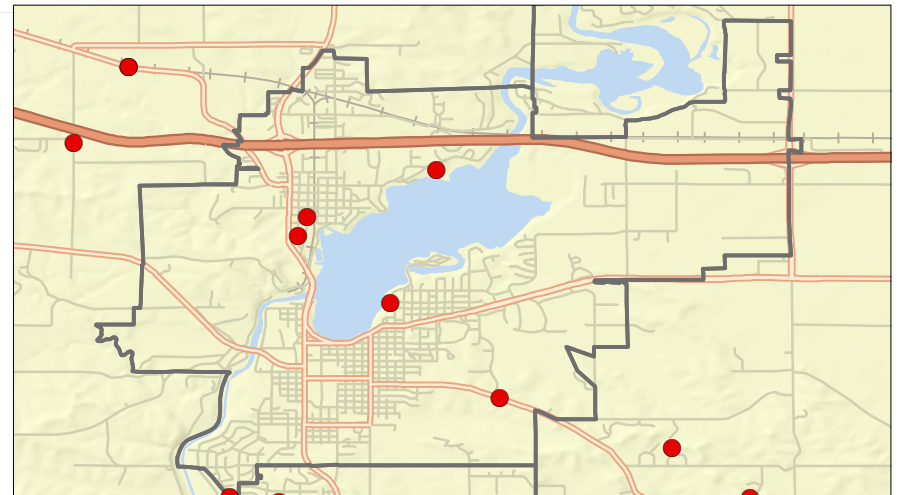
● Security System

- City, Village or Town Boundary
- Freeway or Hiway
- Other Major or Minor Arterial
- Local Road



0 5 10 Miles

City of Menomonie



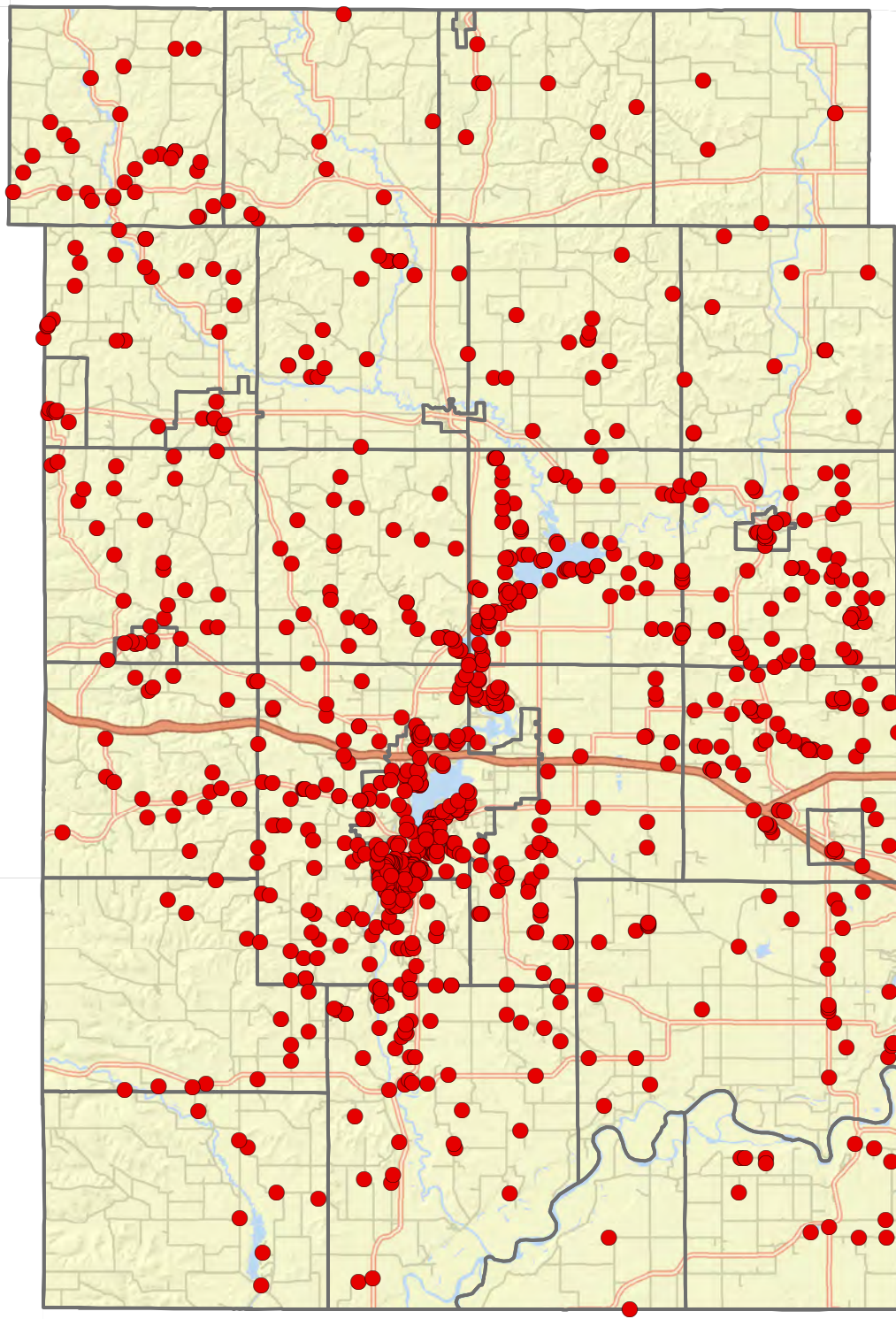
0 4 Miles

Dunn County Broadband Residential Survey - Question 21-2

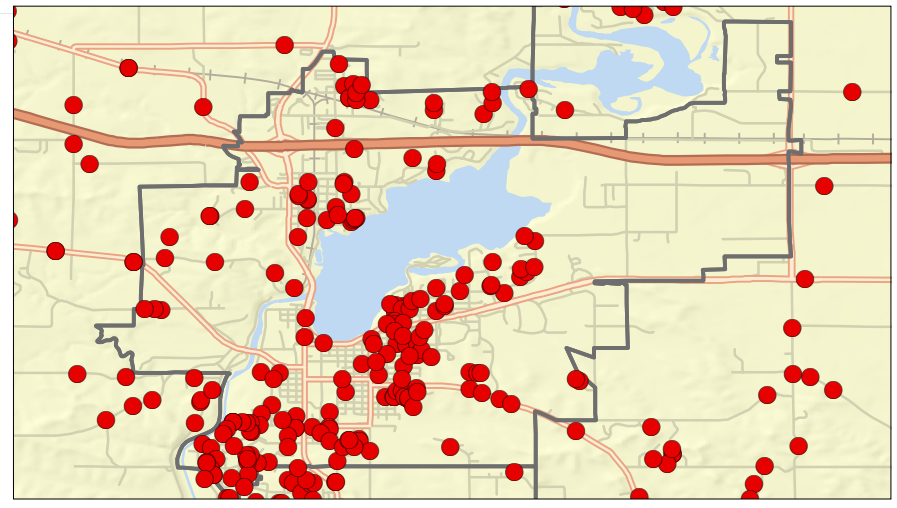
At your home, which of the following devices do you currently access Broadband/Internet services from?

● Smart Phone

- City, Village or Town Boundary
- Freeway or Hiway
- Other Major or Minor Arterial
- Local Road



City of Menomonie



0 5 10 Miles

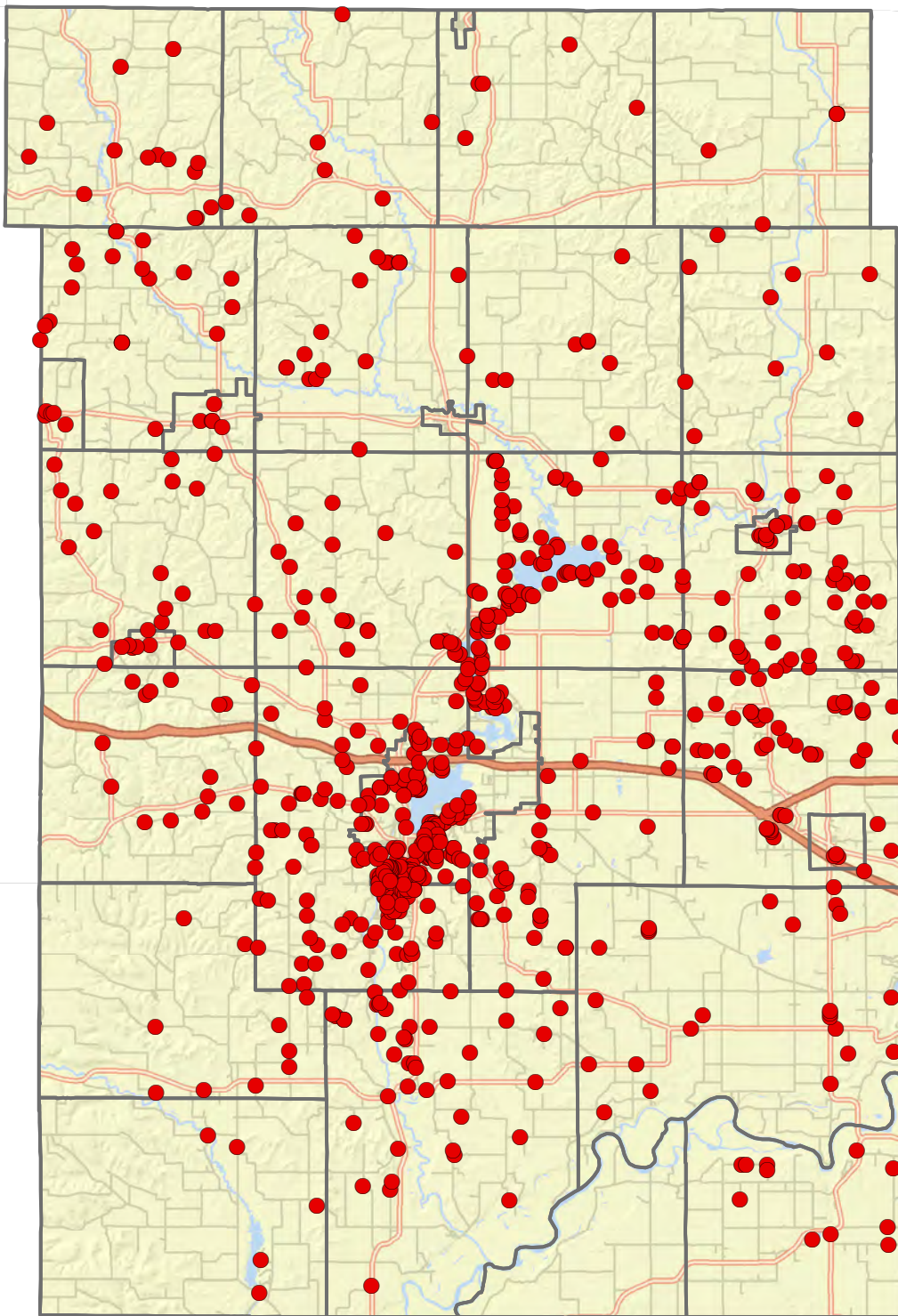
0 4 Miles

Dunn County Broadband Residential Survey - Question 21-3

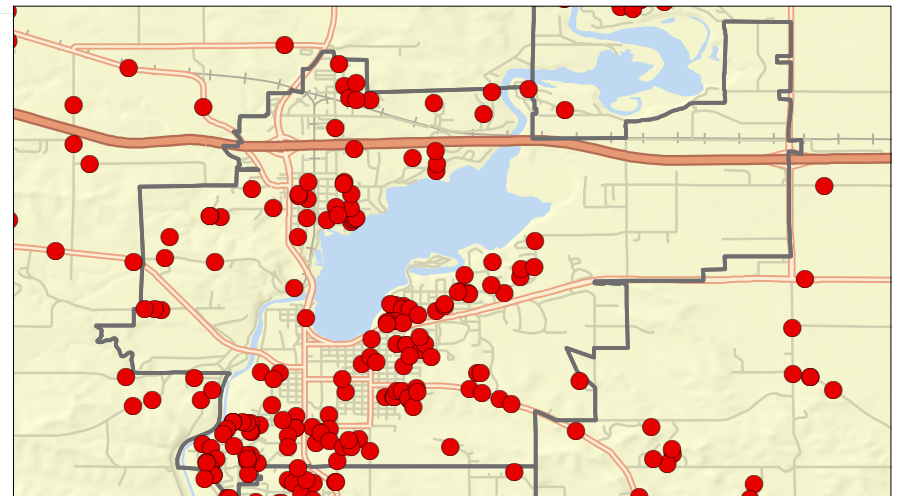
At your home, which of the following devices do you currently access Broadband/Internet services from?

● Tablet Computer

- City, Village or Town Boundary
- Freeway or Hiway
- Other Major or Minor Arterial
- Local Road



City of Menomonie



0 5 10 Miles

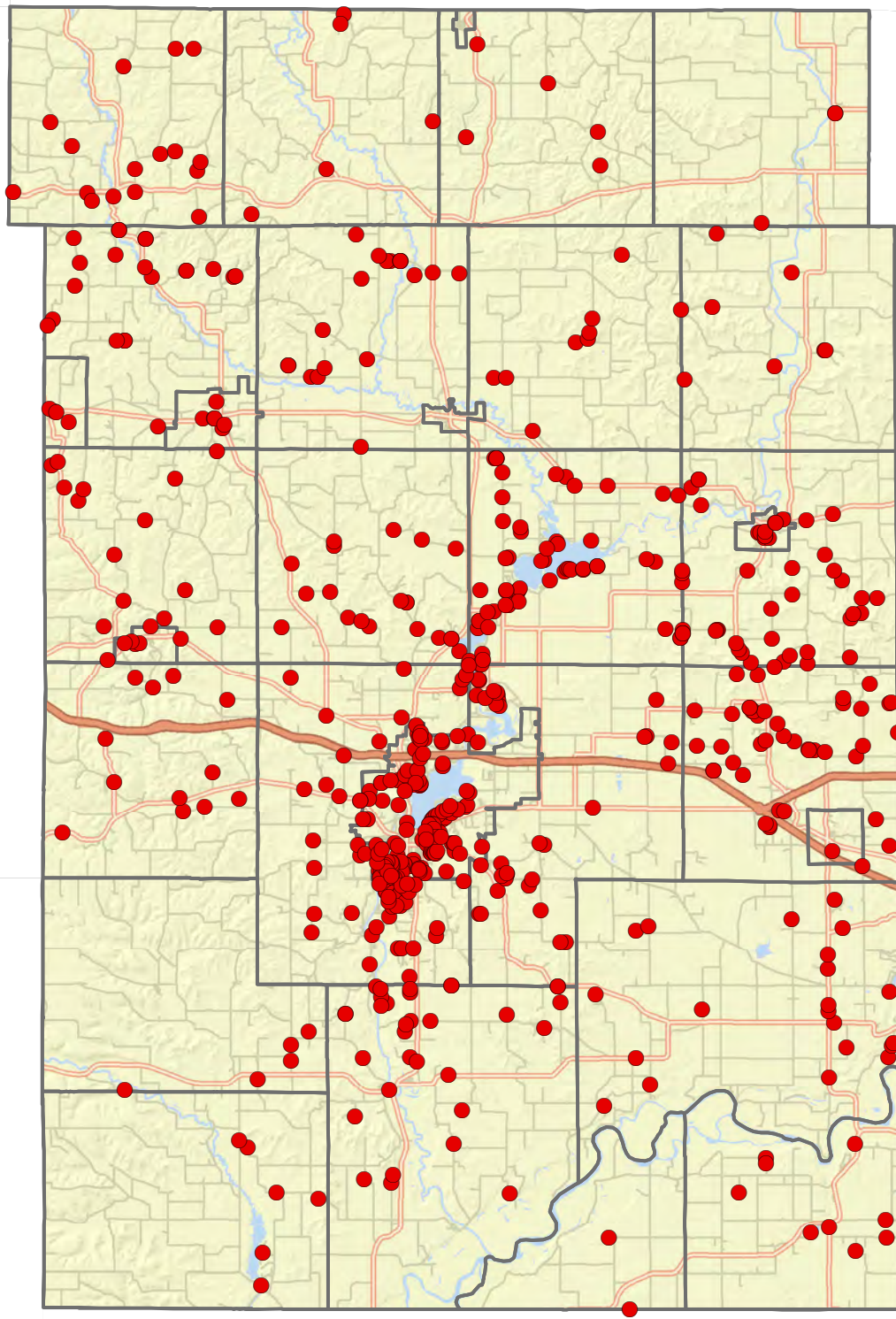
0 4 Miles

Dunn County Broadband Residential Survey - Question 21-4

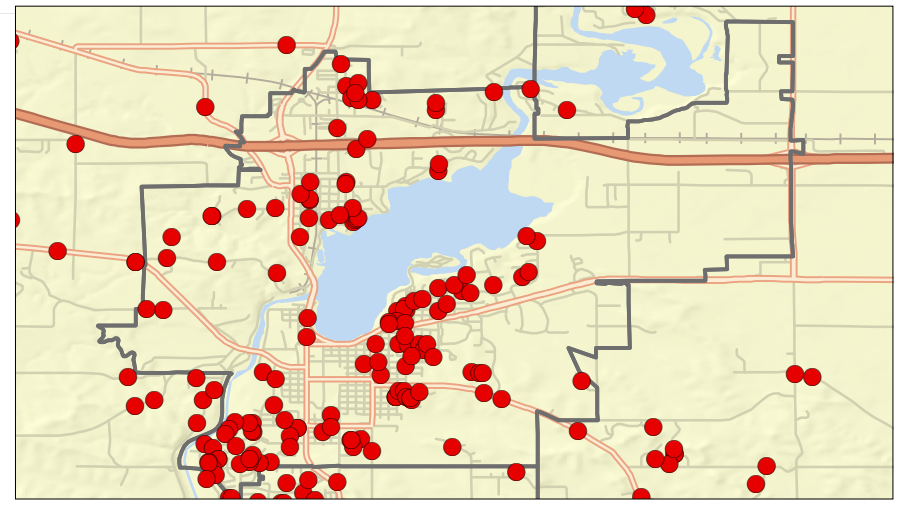
At your home, which of the following devices do you currently access Broadband/Internet services from?

● Television

- City, Village or Town Boundary
- Freeway or Hiway
- Other Major or Minor Arterial
- Local Road



City of Menomonie



0 5 10 Miles

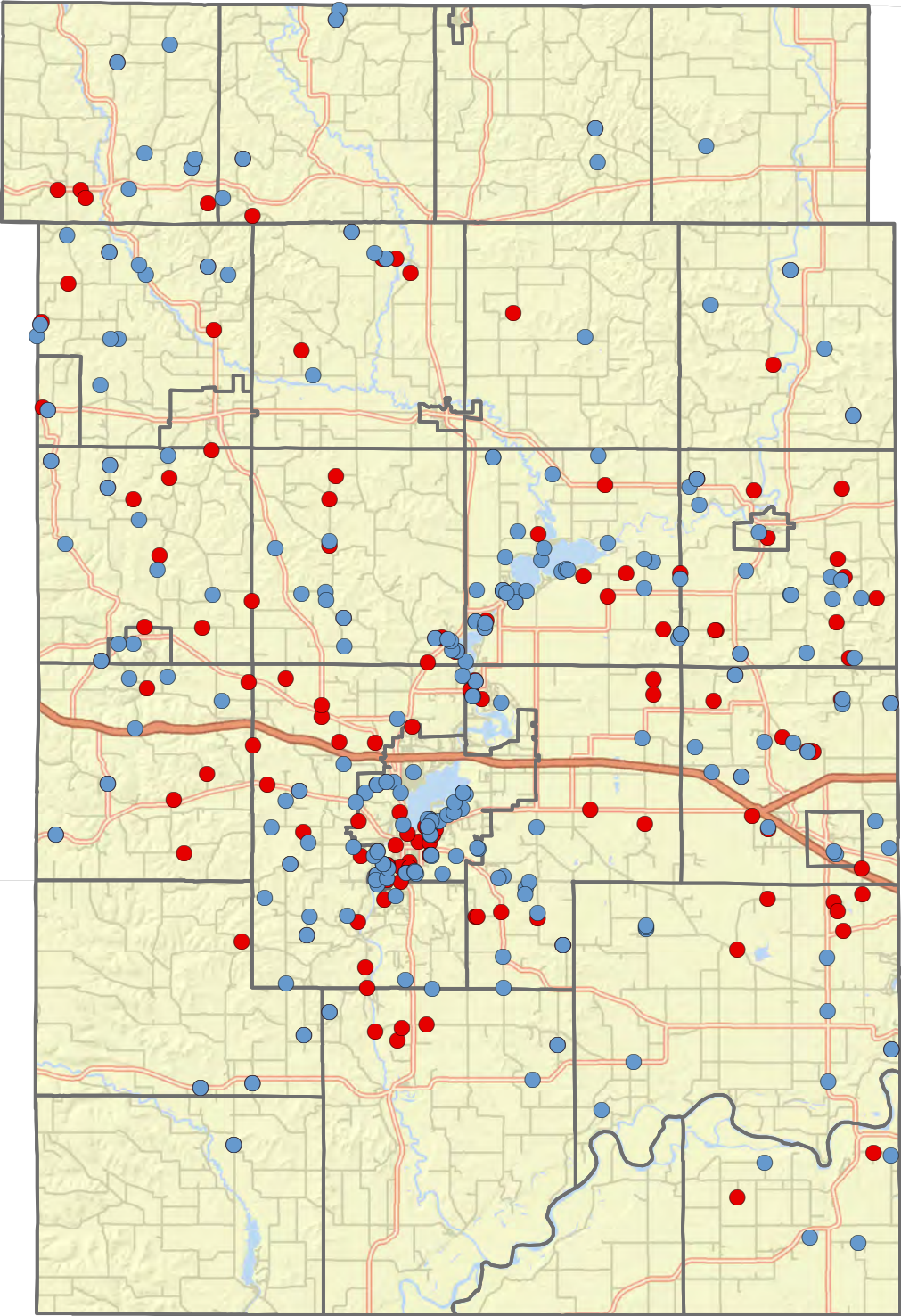
0 4 Miles

Dunn County Broadband Residential Survey - Question 23

Please indicate if someone (including yourself) in your household currently runs a home-based business or telecommutes at your home:

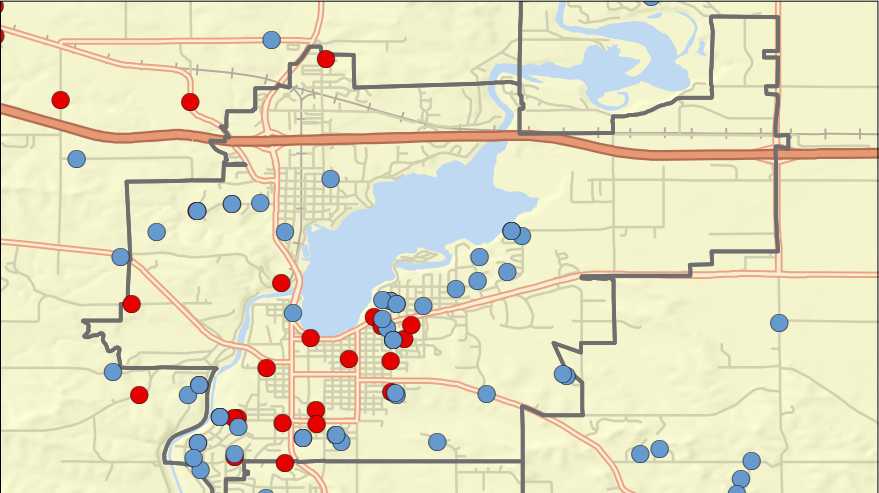
- Currently runs a home-based business
- Currently telecommutes

- City, Village or Town Boundary
- Freeway or Hiway
- Other Major or Minor Arterial
- Local Road



0 5 10 Miles

City of Menomonie



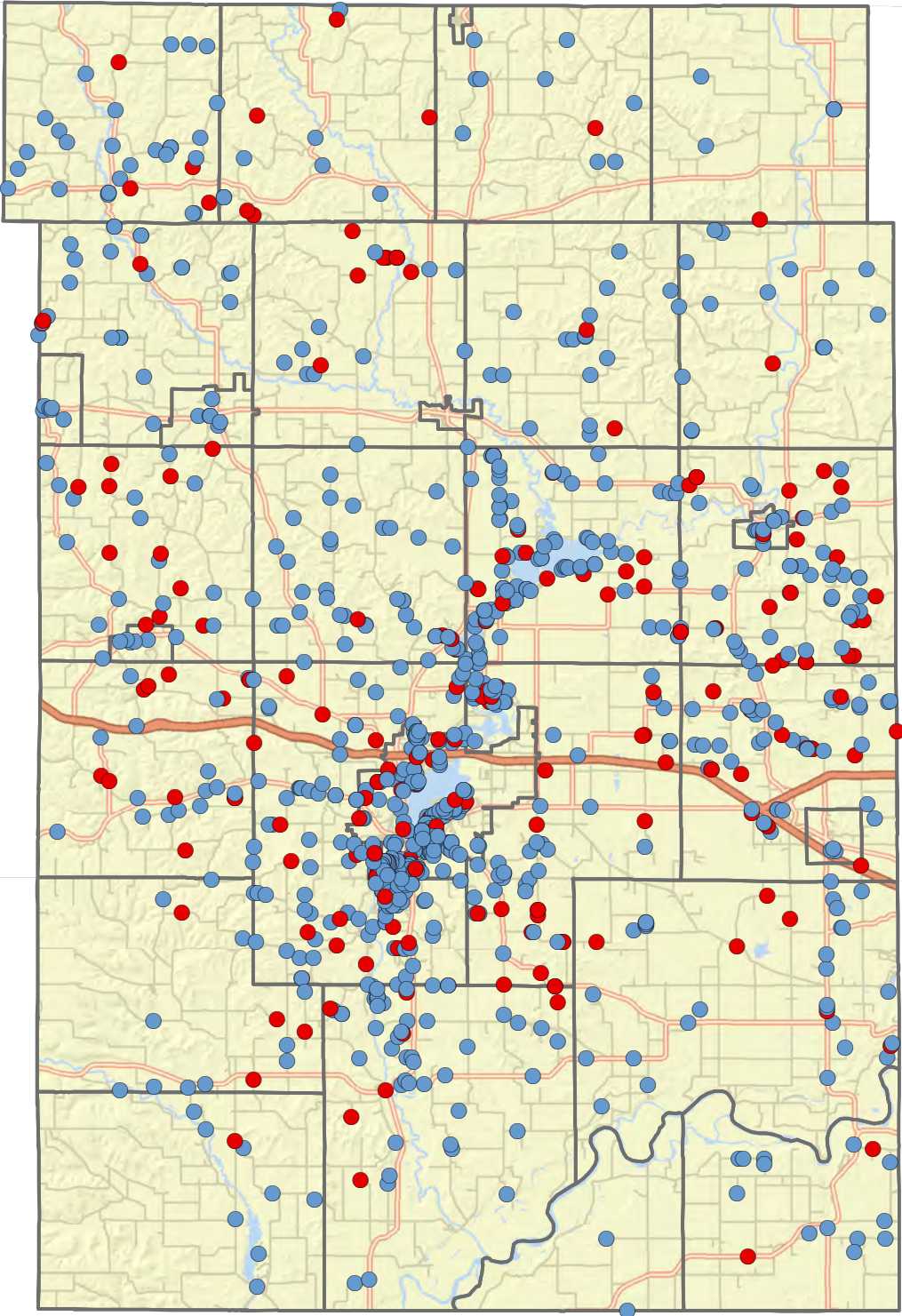
0 4 Miles

Dunn County Broadband Residential Survey - Question 24-1

Please indicate if someone (including yourself) in your household plans to run a home-based business at your home.

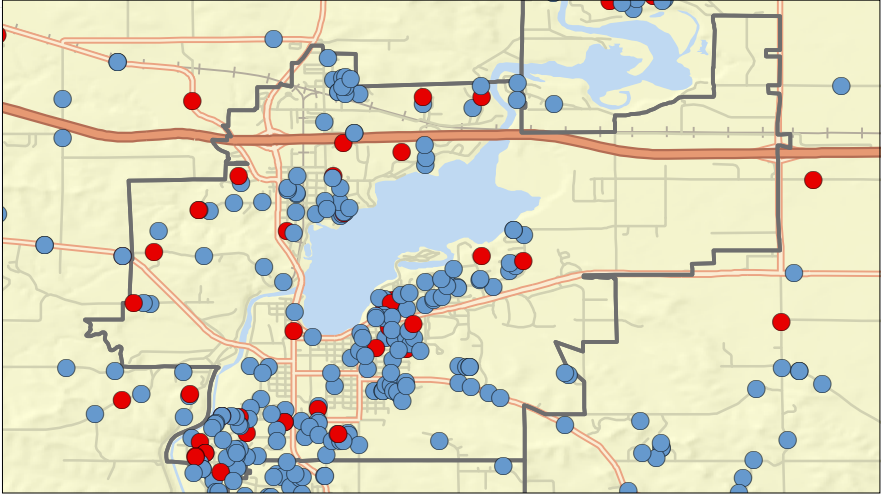
- Yes
- No

- City, Village or Town Boundary
- Freeway or Hiway
- Other Major or Minor Arterial
- Local Road



0 5 10 Miles

City of Menomonie



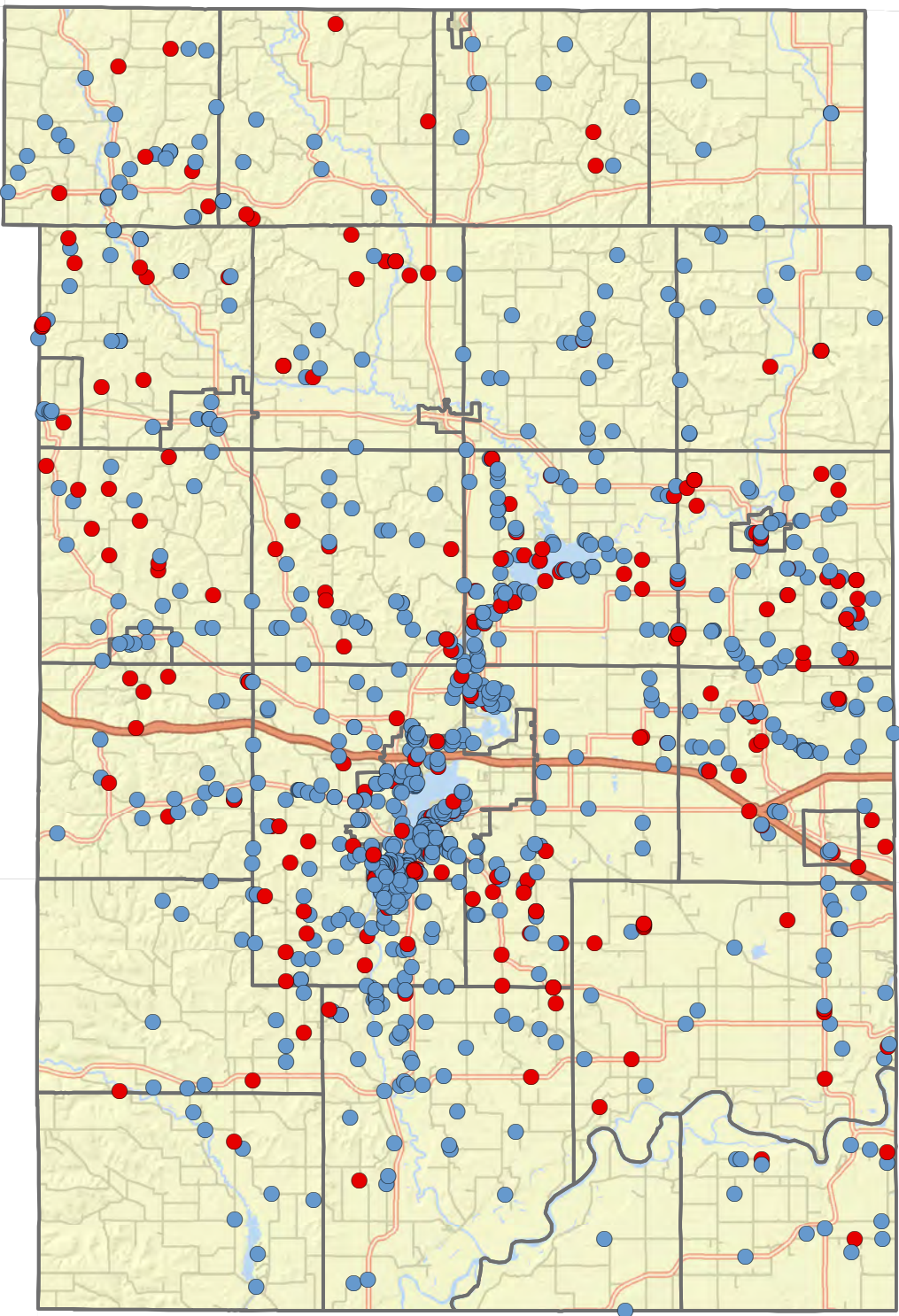
0 4 Miles

Dunn County Broadband Residential Survey - Question 24-2

Please indicate if someone (including yourself) in your household plans to telecommute at your home.

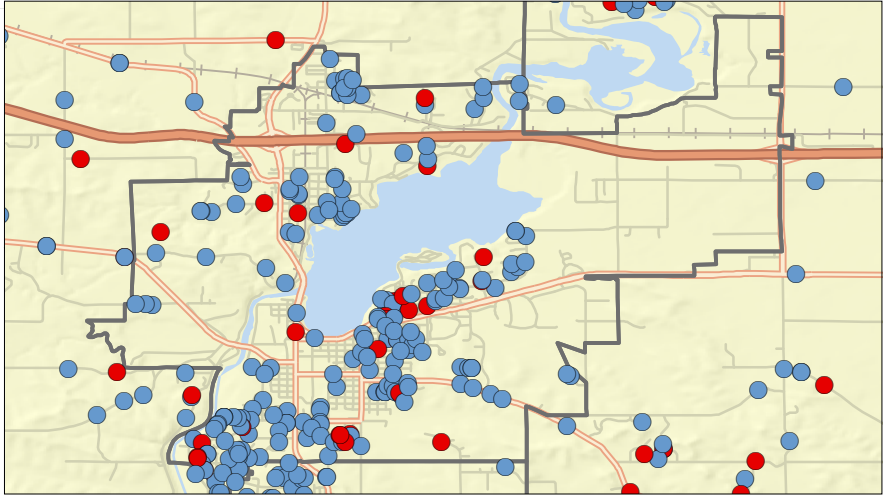
- Yes
- No

- City, Village or Town Boundary
- Freeway or Hiway
- Other Major or Minor Arterial
- Local Road



0 5 10 Miles

City of Menomonie



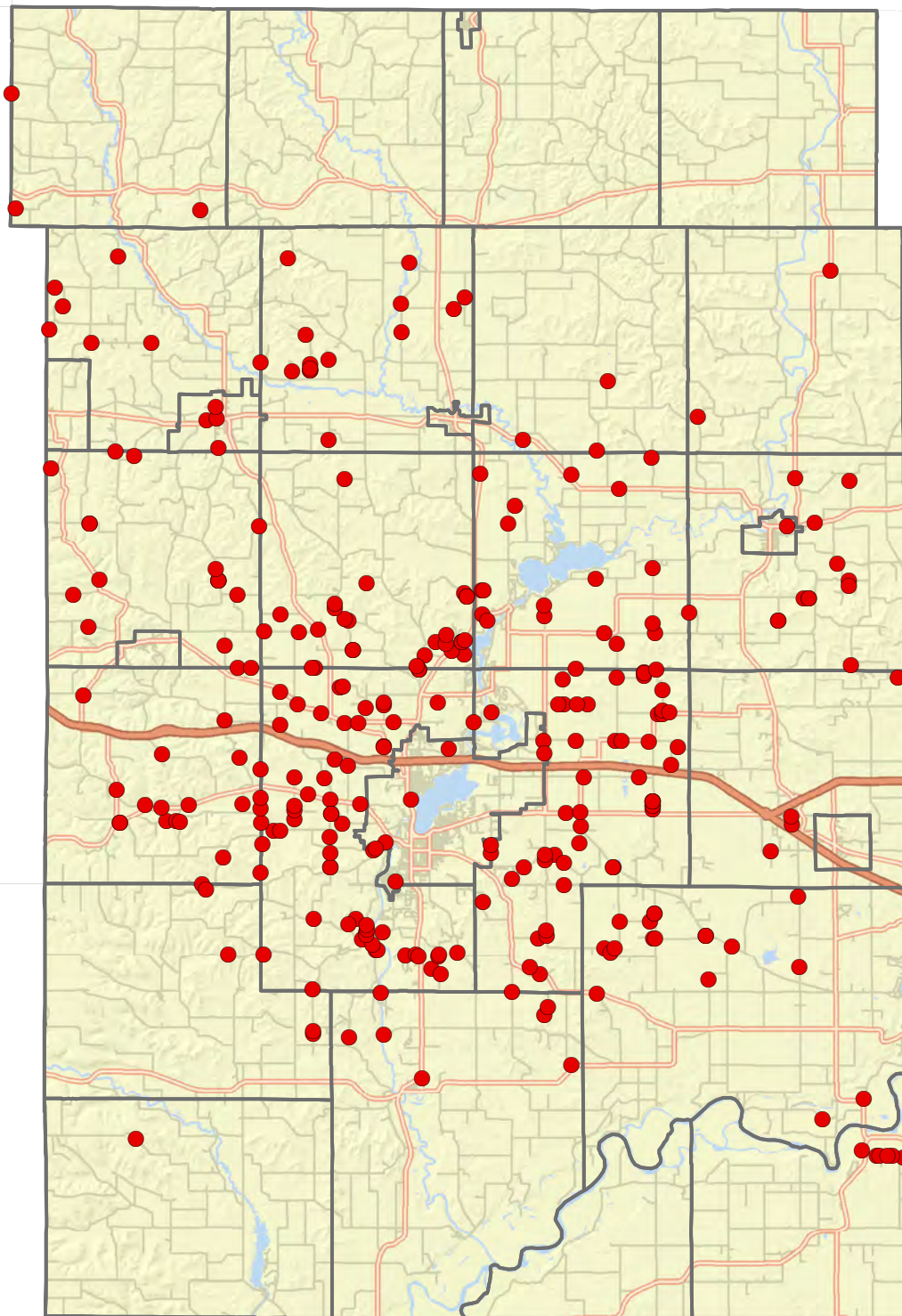
0 4 Miles

Dunn County Broadband Residential Survey - Question 26

Please indicate why you do not currently have Broadband/Internet Service at your home:

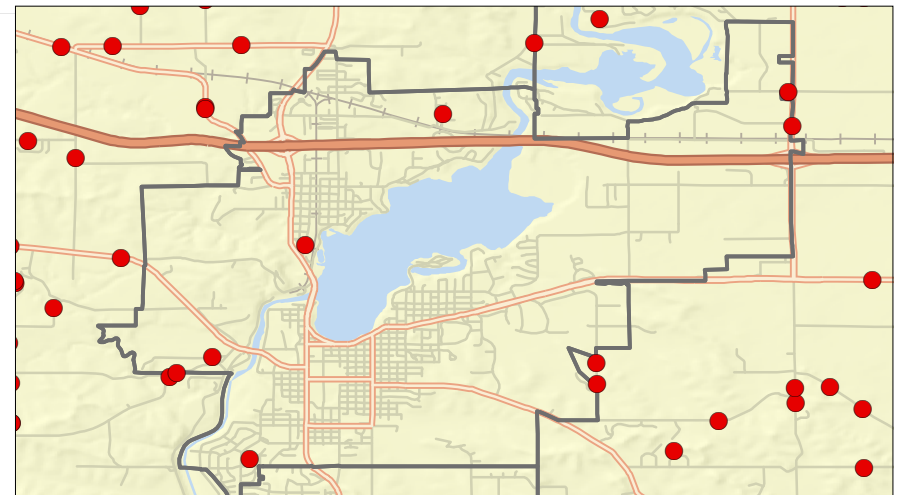
● Not available

- City, Village or Town Boundary
- Freeway or Highway
- Other Major or Minor Arterial
- Local Road



0 5 10 Miles

City of Menomonie



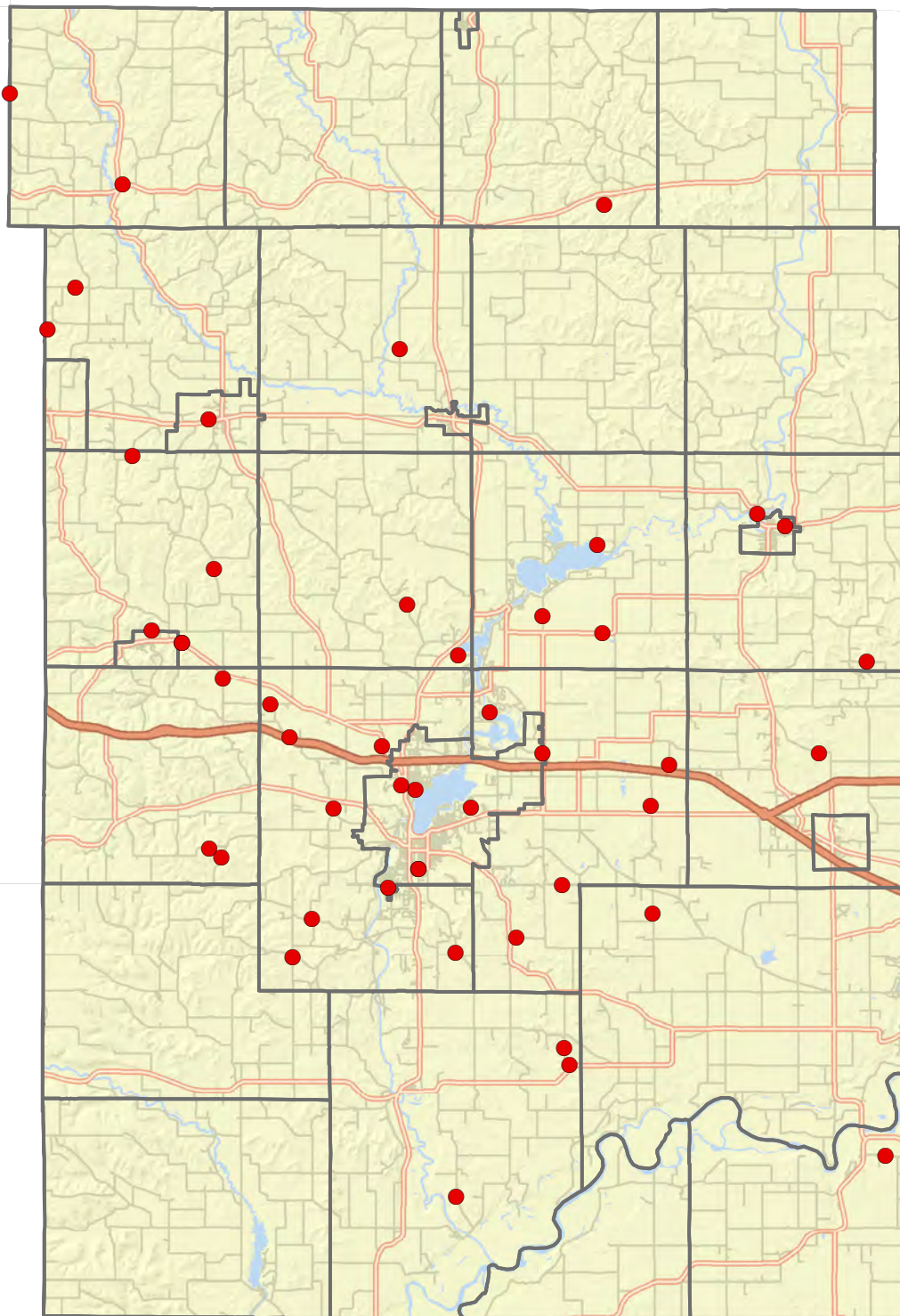
0 4 Miles

Dunn County Broadband Residential Survey - Question 26

Please indicate why you do not currently have Broadband/Internet Service at your home:

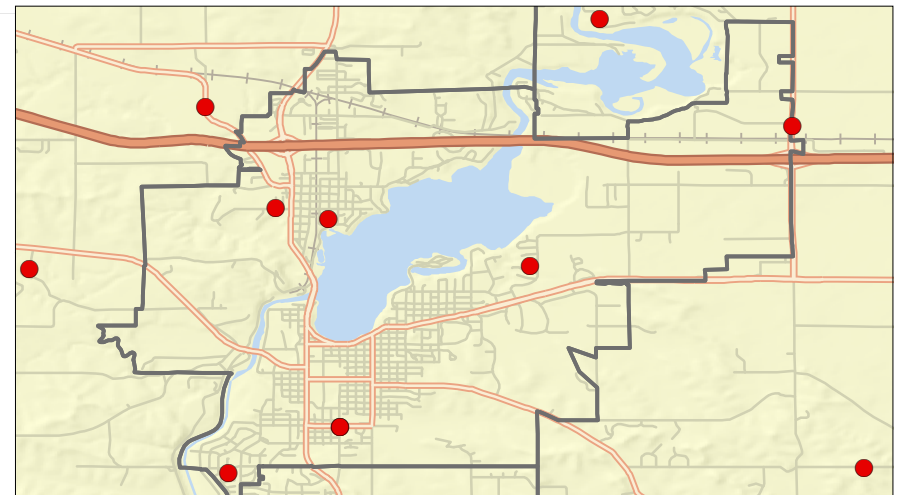
● Too expensive

- City, Village or Town Boundary
- Freeway or Highway
- Other Major or Minor Arterial
- Local Road



0 5 10 Miles

City of Menomonie



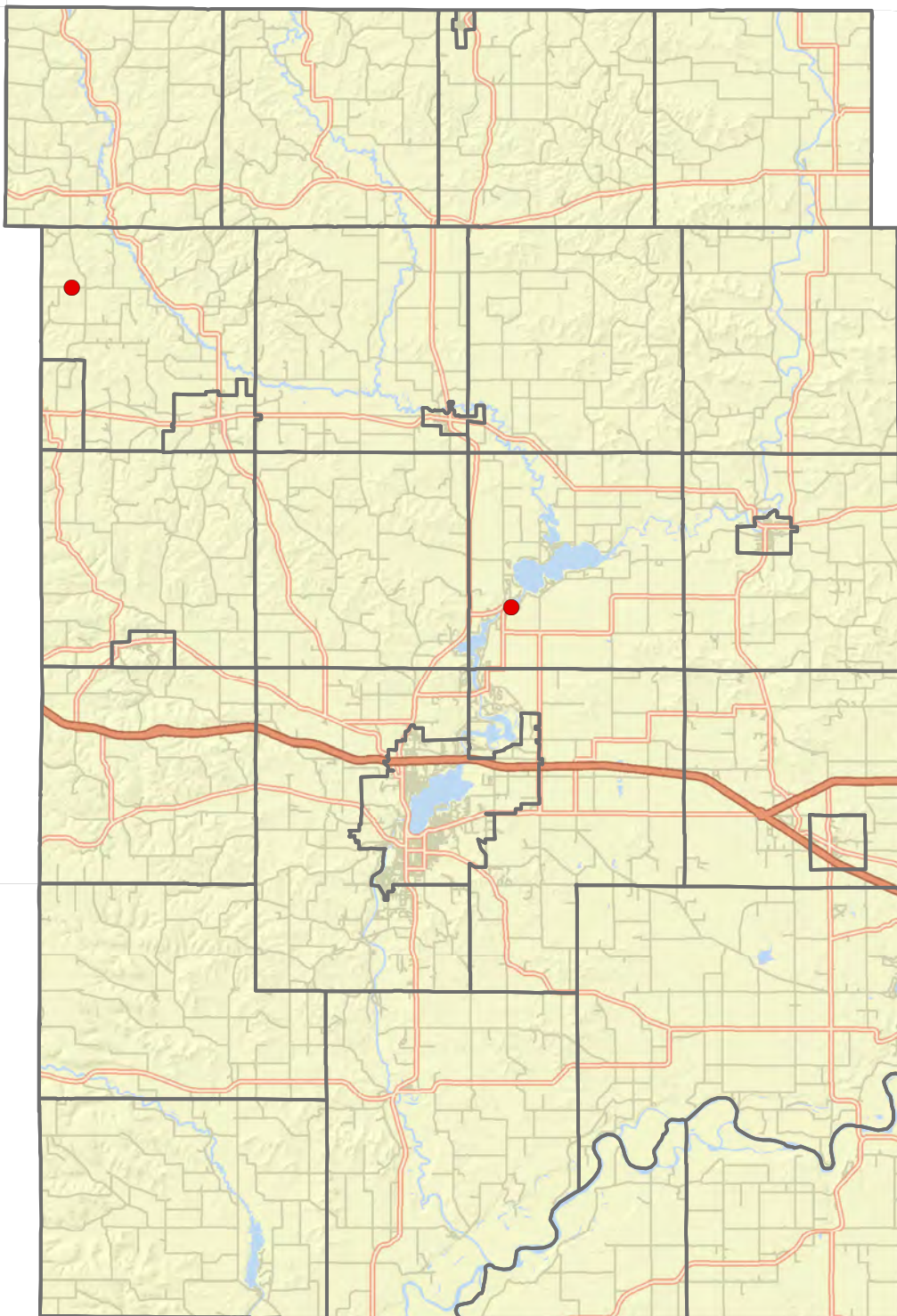
0 4 Miles

Dunn County Broadband Residential Survey - Question 26

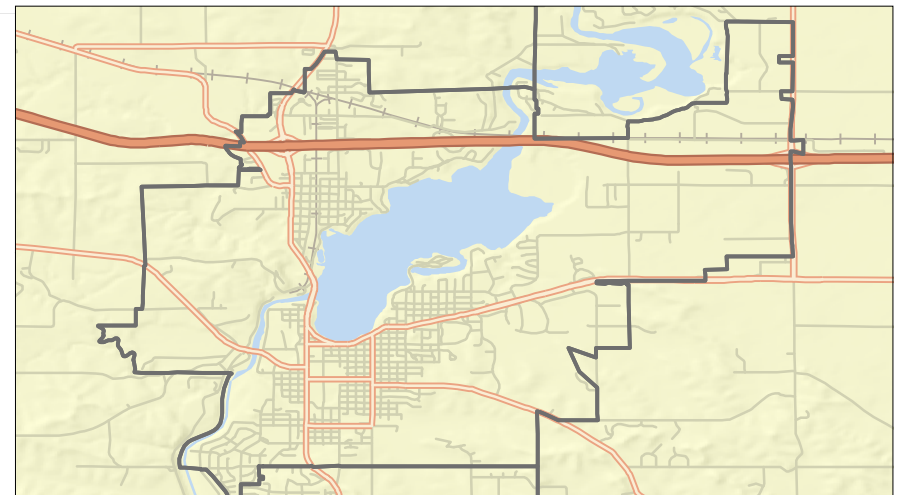
Please indicate why you do not currently have Broadband/Internet Service at your home:

● No need

- City, Village or Town Boundary
- Freeway or Highway
- Other Major or Minor Arterial
- Local Road



City of Menomonie



0 4 Miles

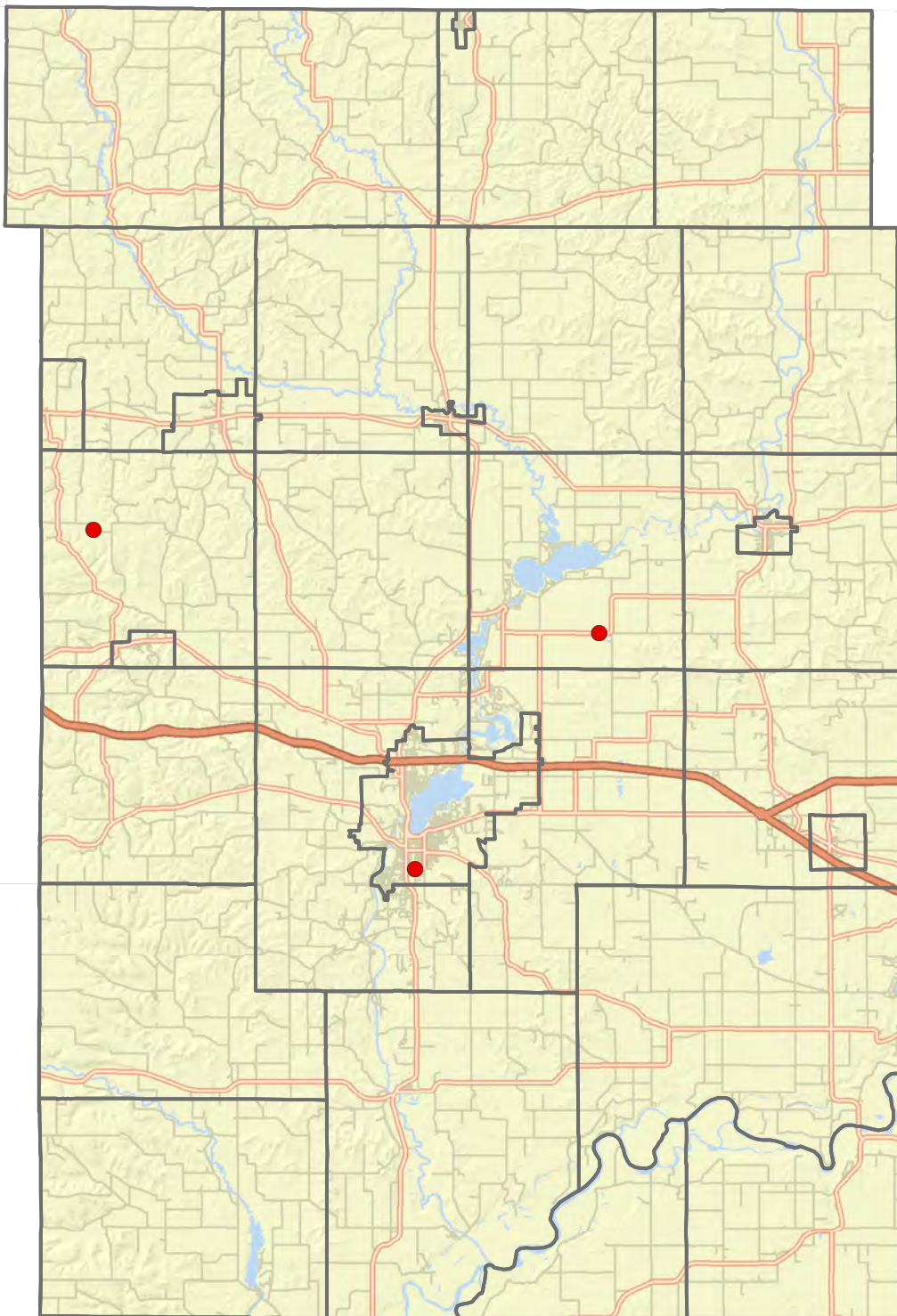
0 5 10 Miles

Dunn County Broadband Residential Survey - Question 26

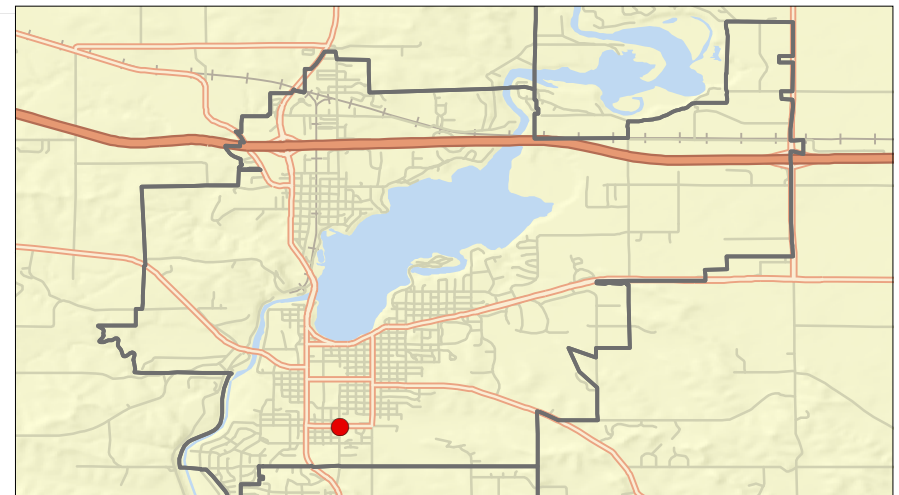
Please indicate why you do not currently have Broadband/Internet Service at your home:

- Lack of or limited skills/knowledge to use

- City, Village or Town Boundary
- Freeway or Highway
- Other Major or Minor Arterial
- Local Road



City of Menomonie

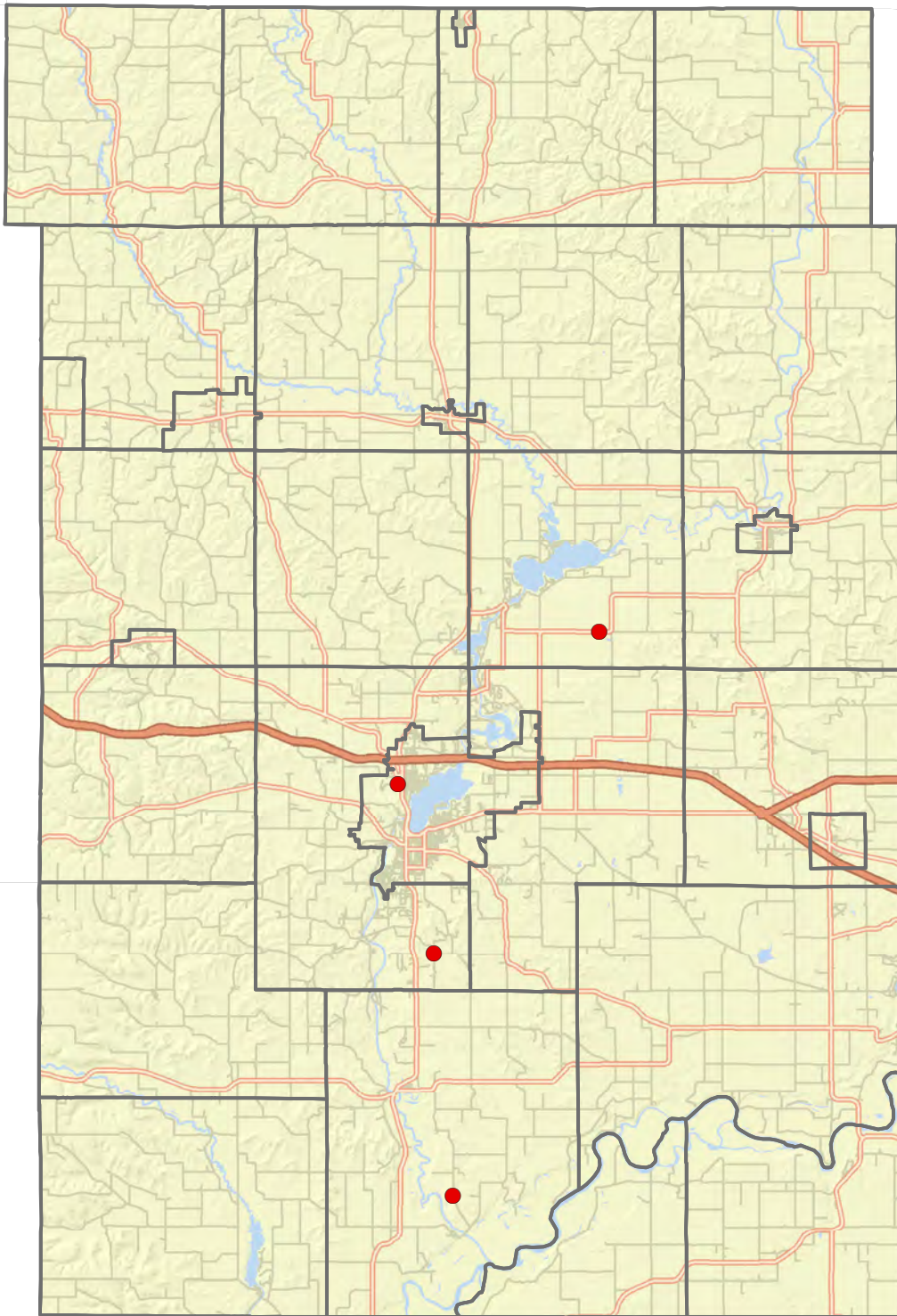


Dunn County Broadband Residential Survey - Question 26

Please indicate why you do not currently have Broadband/Internet Service at your home:

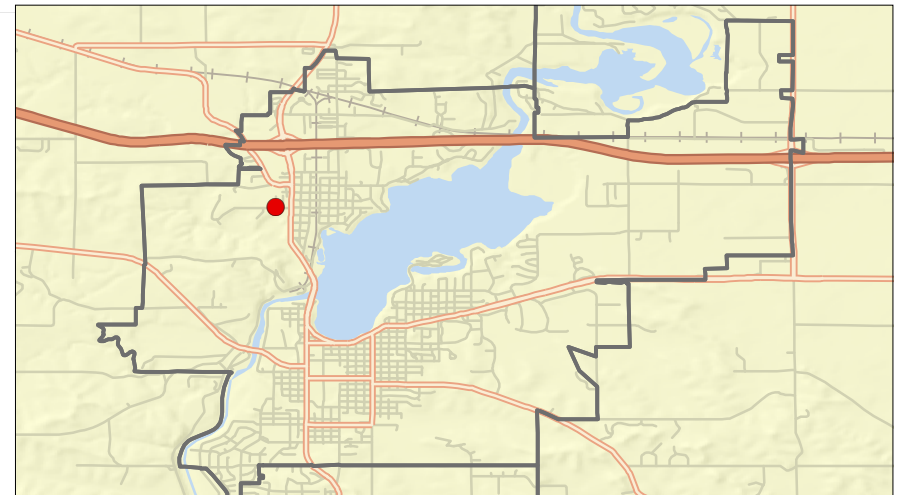
● Lack of computer or other device(s)

- City, Village or Town Boundary
- Freeway or Highway
- Other Major or Minor Arterial
- Local Road



0 5 10 Miles

City of Menomonie



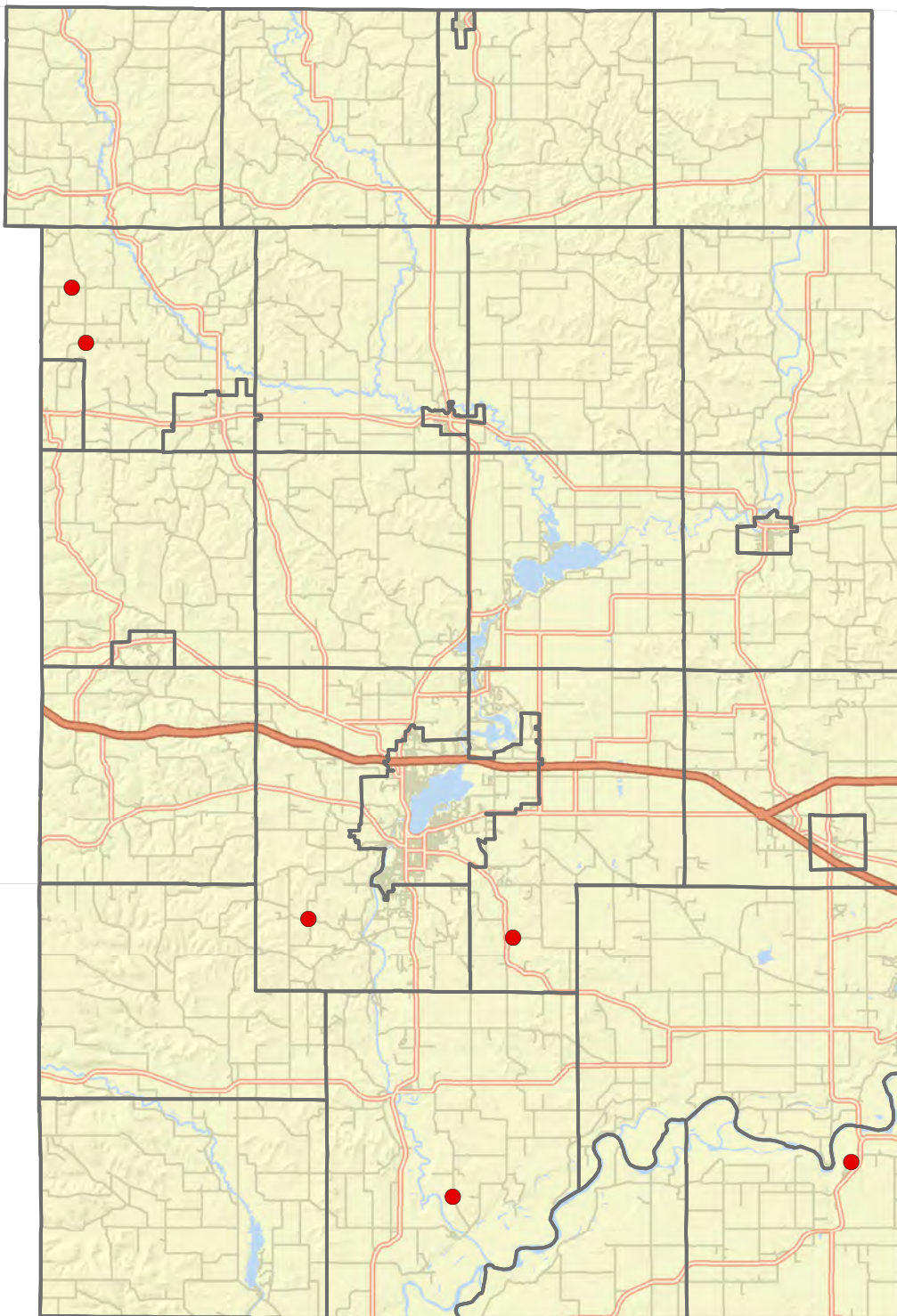
0 4 Miles

Dunn County Broadband Residential Survey - Question 26

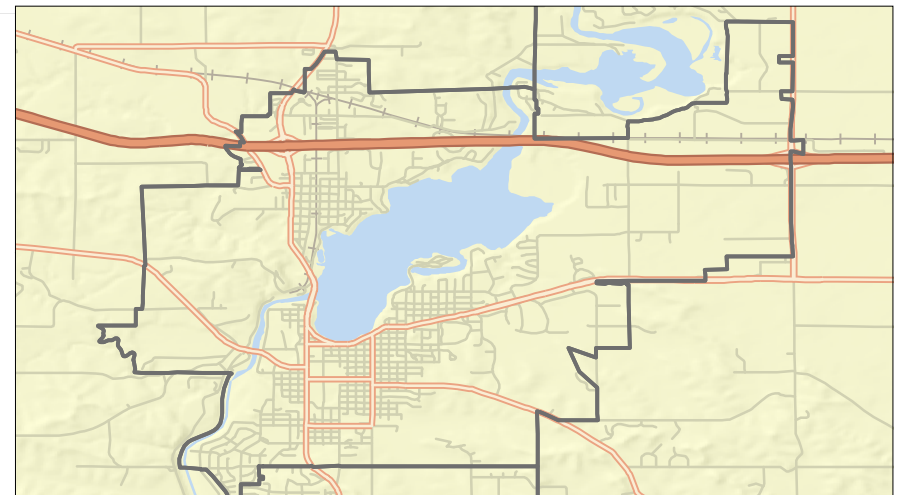
Please indicate why you do not currently have Broadband/Internet Service at your home:

● Use in another location

- City, Village or Town Boundary
- Freeway or Highway
- Other Major or Minor Arterial
- Local Road



City of Menomonie



0 5 10 Miles

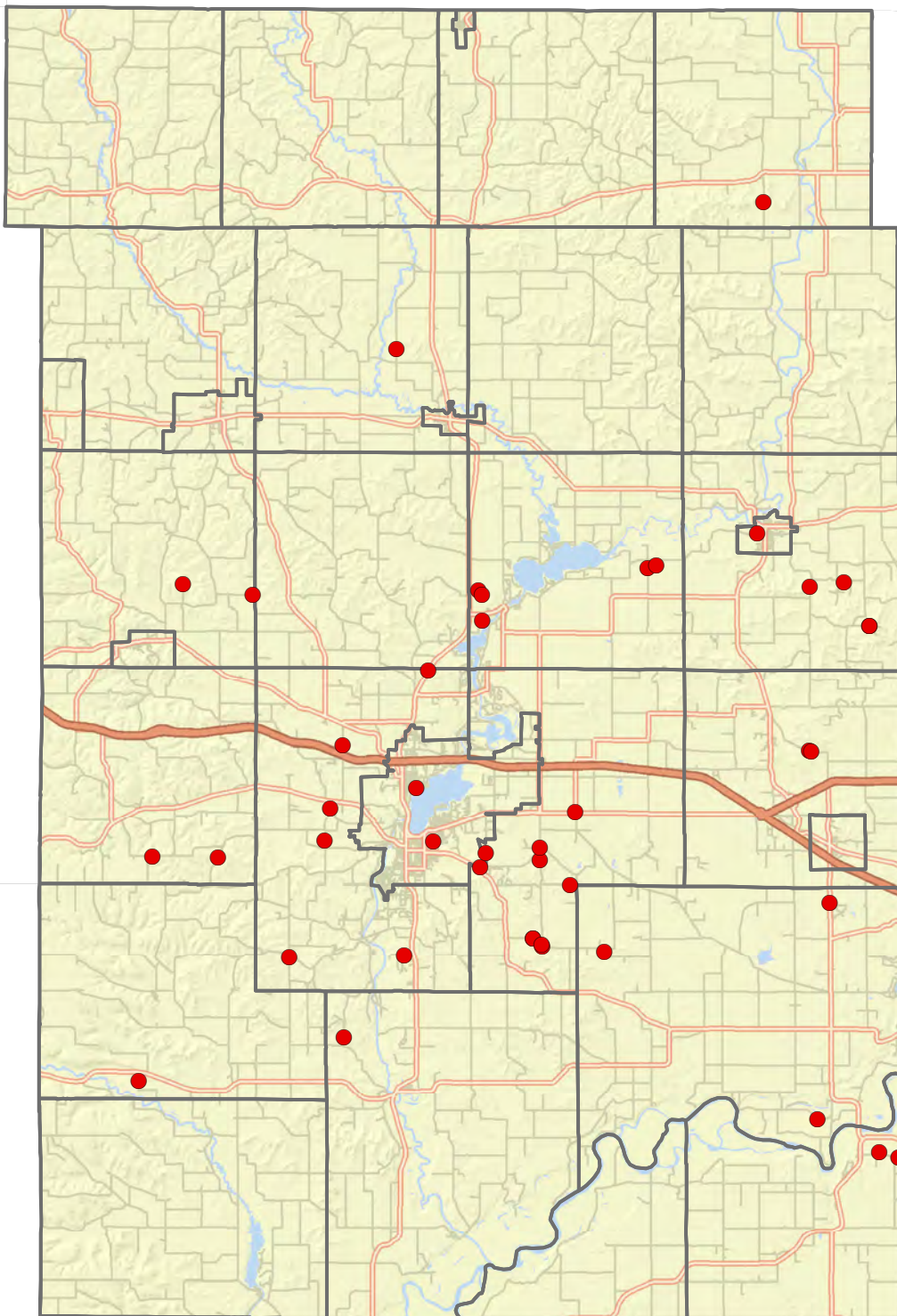
0 4 Miles

Dunn County Broadband Residential Survey - Question 26

Please indicate why you do not currently have Broadband/Internet Service at your home:

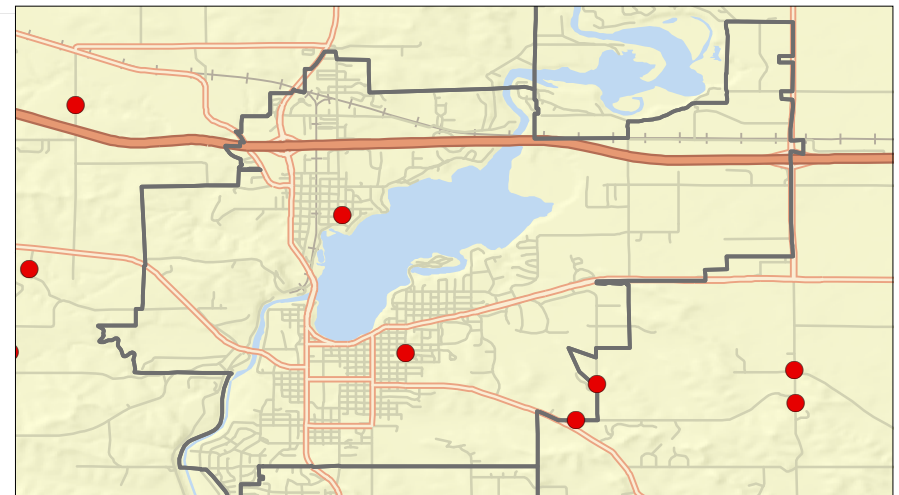
● Other

- City, Village or Town Boundary
- Freeway or Highway
- Other Major or Minor Arterial
- Local Road



0 5 10 Miles

City of Menomonie



0 4 Miles

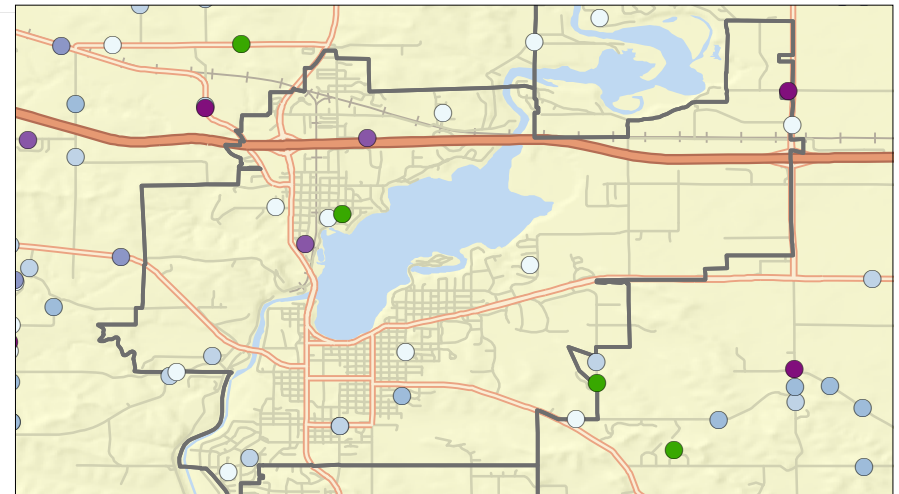
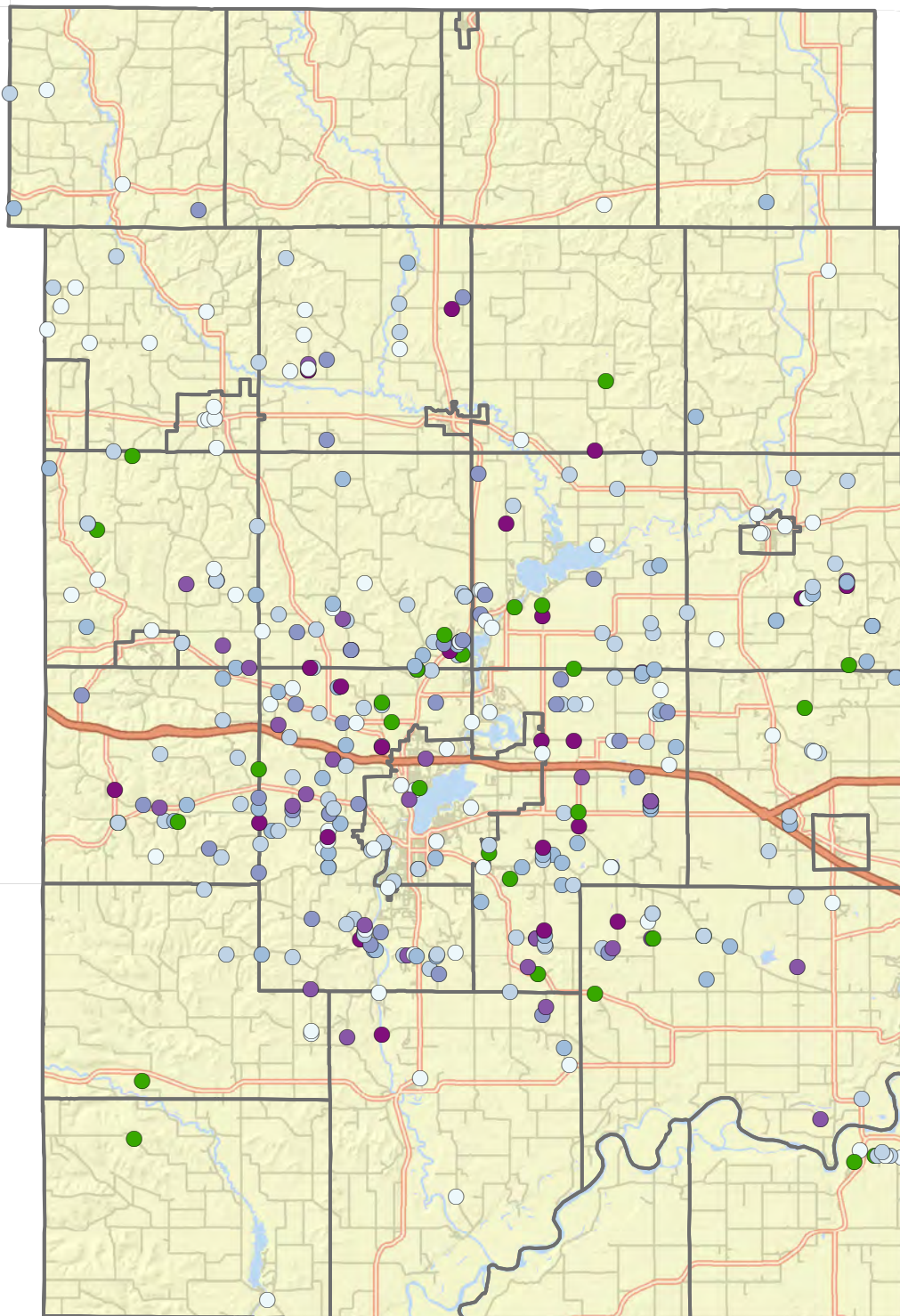
Dunn County Broadband Residential Survey - Question 27

If you did have access, what is the maximum you would be willing to pay for high speed Internet (with a minimum download speed of 25 mbps and 4 mbps upload - per federal definition)?

- Less than \$39.99 per month
- Between \$40 and \$49.99 per month
- Between \$50 and \$59.99 per month
- Between \$60 and \$69.99 per month
- Between \$70 and \$79.99 per month
- \$80 or more per month
- Unsure / Do not know

- City, Village or Town Boundary
- Freeway or Highway
- Other Major or Minor Arterial
- Local Road

City of Menomonie



0 5 10 Miles

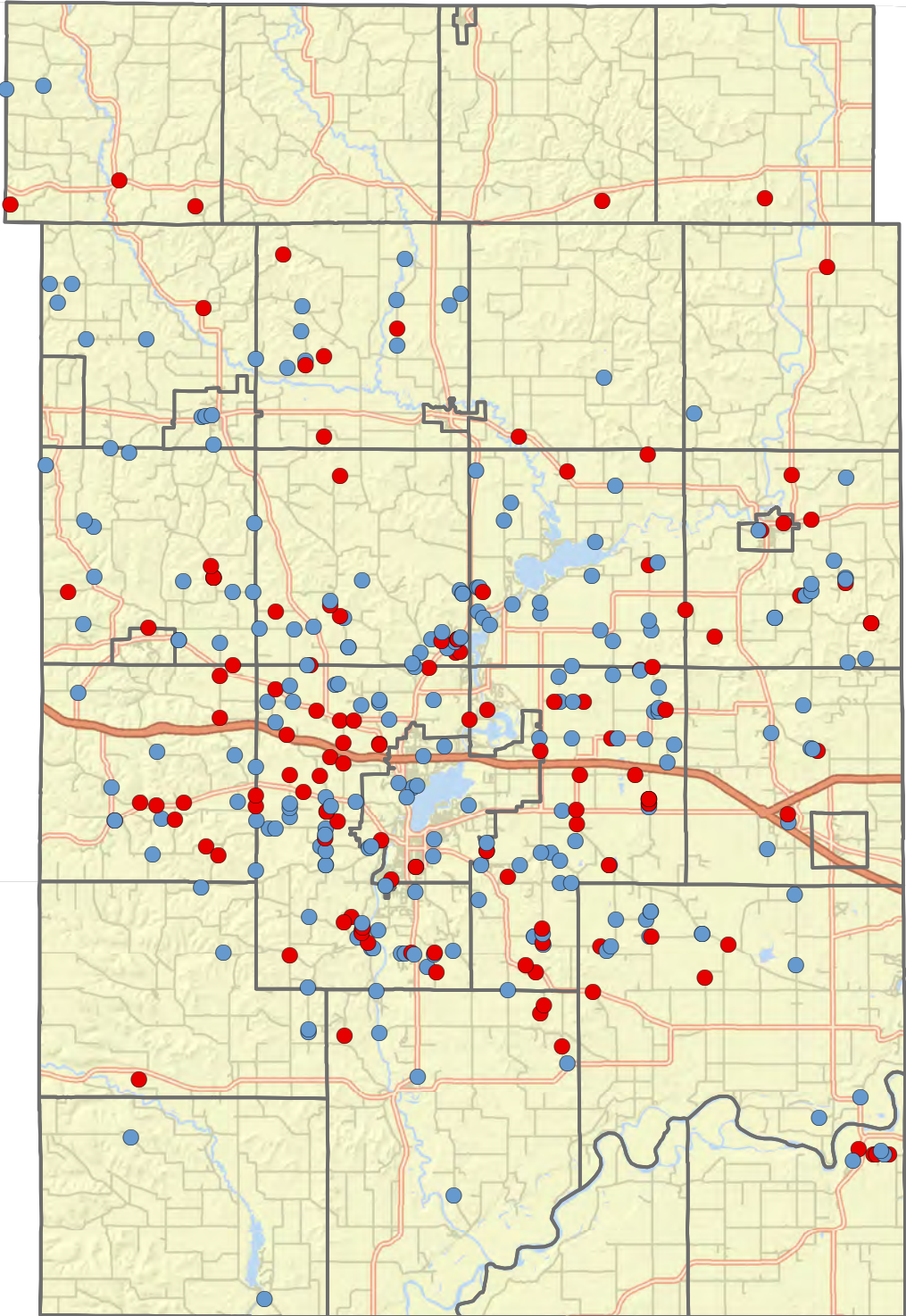
0 4 Miles

Dunn County Broadband Residential Survey - Question 31-1

If broadband services were available at your residence, please indicate if someone in your household would plan to start a home-based business.

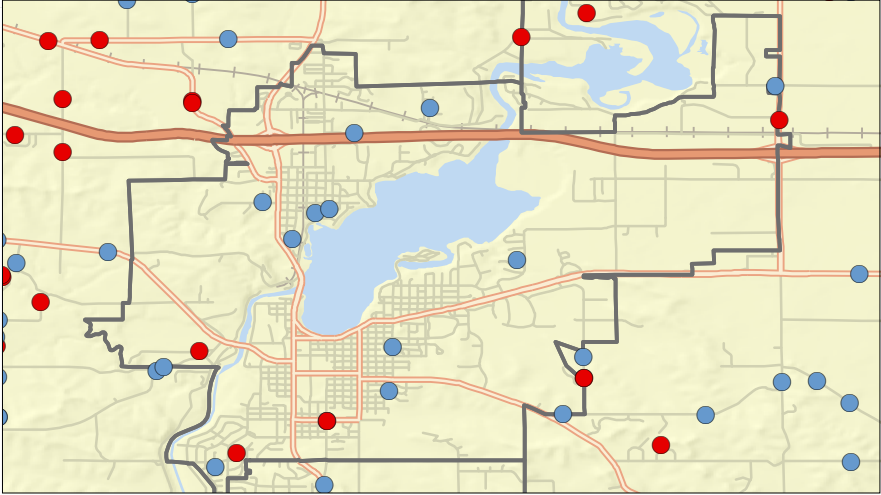
- Yes
- No

- City, Village or Town Boundary
- Freeway or Hiway
- Other Major or Minor Arterial
- Local Road



0 5 10 Miles

City of Menomonie



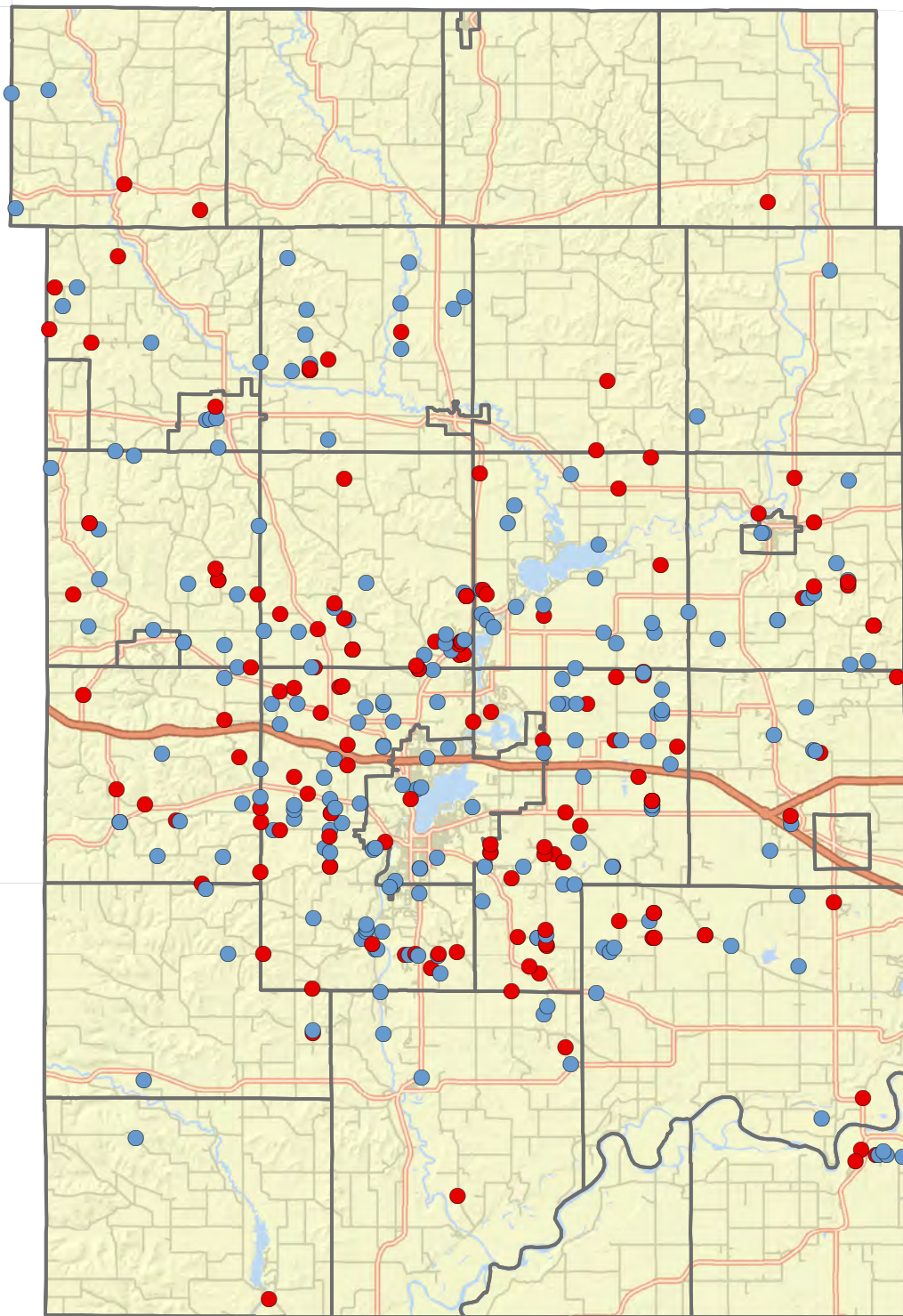
0 4 Miles

Dunn County Broadband Residential Survey - Question 31-2

If broadband services were available at your residence, please indicate if someone in your household would plan to telecommute.

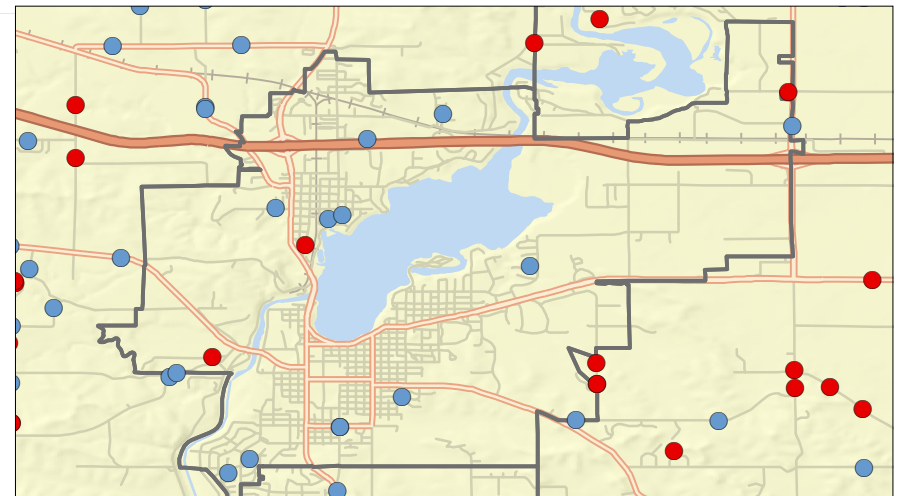
- Yes
- No

- City, Village or Town Boundary
- Freeway or Hiway
- Other Major or Minor Arterial
- Local Road



0 5 10 Miles

City of Menomonie



0 4 Miles